


LOC I-SLN	APP CRS	Rwy Ldg
108.9	353°	12300
		TDZE 1271
		Apt Elev 1288

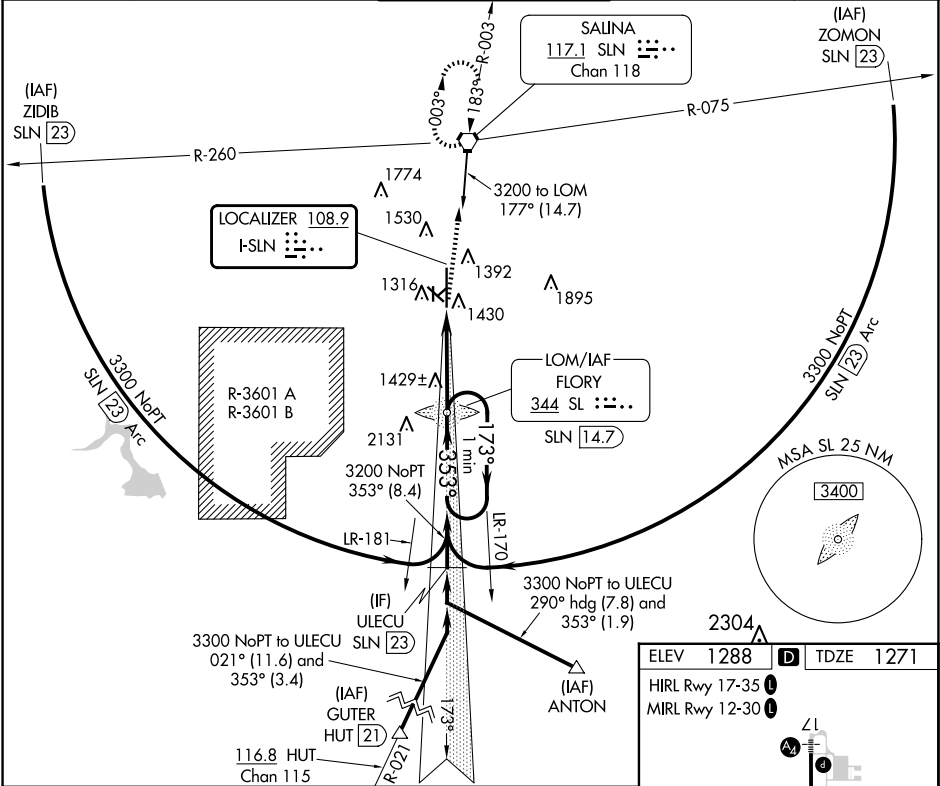
ILS or LOC RWY 35
SALINA RGNL (SLN)

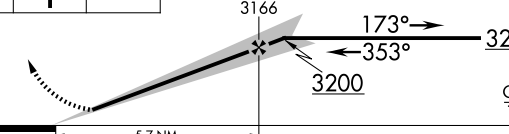
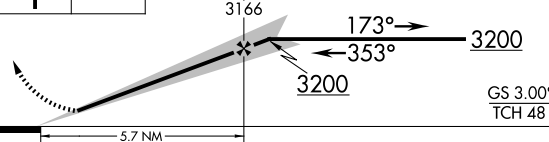
⚠ For inop ALS, increase S-LOC 35 Cat D visibility to 1½ SM and Cat E visibility to 1½ SM. For inop ALS, increase S-ILS 35 Cat E visibility to ¾ SM. Circling NA for Cats D and E southwest of Rwy 12-30.

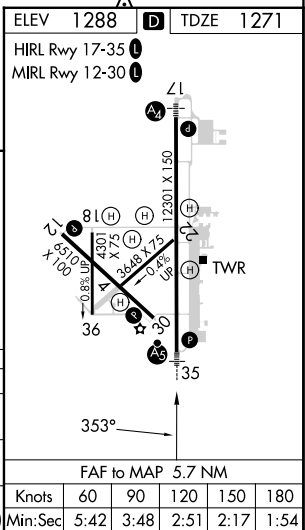
MALSR 

MISSED APPROACH: Climb to 1700 then climb to 3000 direct SLN VORTAC and hold.

ATIS 120.15	KANSAS CITY CENTER 134.9 363.2	SALINA TOWER ★ 119.3 (CTAF) 0 257.7	GND CON 121.9 360.8	UNICOM 122.95
-----------------------	--	---	-------------------------------	-------------------------



1700	3000	SLN
↑	↑	
One Minute Holding Pattern		
		
CATEGORY		
S-ILS 35		
S-LOC 35		
CIRCLING		



SALINA RGNL (SLN)
ILS or LOC RWY 35