

WAAS CH <b>97642</b> <b>W13A</b>	APP CRS <b>133°</b>	Rwy Idg TDZE Apt Elev	<b>5811</b> <b>204</b> <b>213</b>
--	------------------------	-----------------------------	---

RNAV (GPS) RWY 13

MCNARY FLD (SLE)

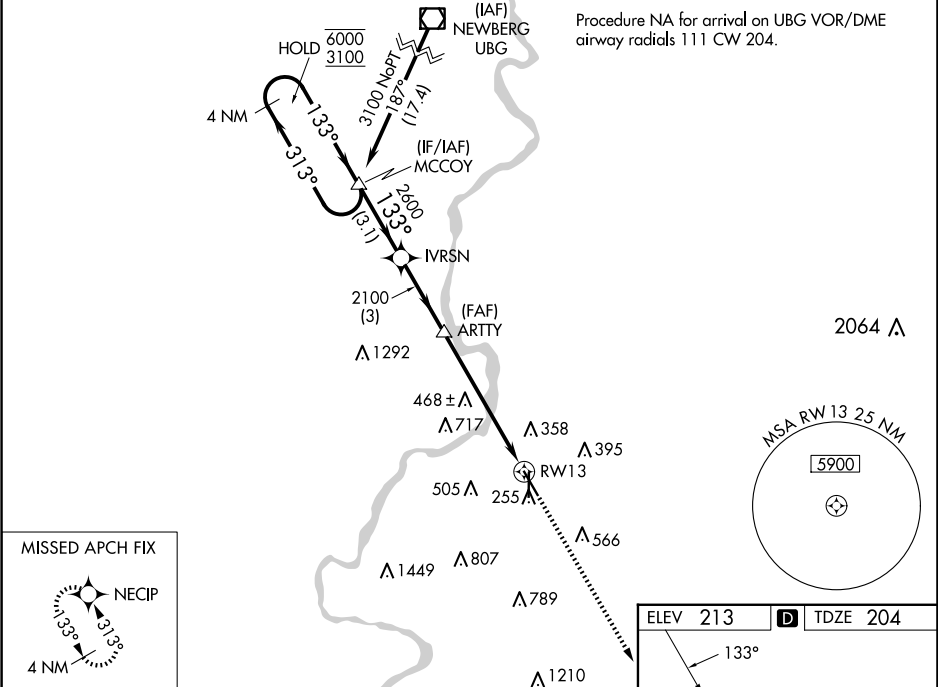
RNP APCH.

Circling Rwy 16, 34 NA at night. Rwy 13 helicopter visibility reduction below ¾ SM NA. Inop table does not apply to LNAV/VNAV all Cats. For uncompensated Baro-VNAV systems, LNAV/VNAV NA below -15°C or above 54°C.

ODALS

MISSED APPROACH: Climb to 3000 direct NECIP and hold.

ATIS <b>124.55</b>	SEATTLE CENTER <b>125.8 291.7</b>	SALEM TOWER ★ <b>119.1</b> (CTAF) <b>0 257.2</b>	GND CON <b>121.9</b>	UNICOM <b>122.95</b>
-----------------------	--------------------------------------	---	-------------------------	-------------------------



4 NM Holding Pattern		MCCOY		IVRSN		ARTTY		3000 NECIP	
6000 ← 313°		3100 → 133°		133°		2600		*1.4 NM to RW13	
GP 3.04°		TCH 50		2100		RW13		*LNAV only	
		3.1 NM		3 NM		4.4 NM		1.4 NM	
CATEGORY		A		B		C		D	
LPV DA		454-¾ 250 (300-¾)							
LNAV/VNAV DA		580-1 376 (400-1)							
LNAV MDA		700-¾ 496 (500-¾)		700-1¼ 496 (500-1¼)					
CIRCLING		880-1 667 (700-1)		960-1 747 (800-1)		1060-2½ 847 (900-2½)		1260-3 1047 (1100-3)	

