

LOC/DME I-SLE <b><u>110.3</u></b> Chan <b>40</b>	APP CRS <b>313°</b>	Rwy Idg <b>5811</b> TDZE <b>213</b> Apt Elev <b>213</b>
--	------------------------	---

ILS or LOC Z RWY 31  
MCNARY FLD (SLE)

### MCNARY FLD (SLE)

RADAR required for procedure entry at ARTTY.

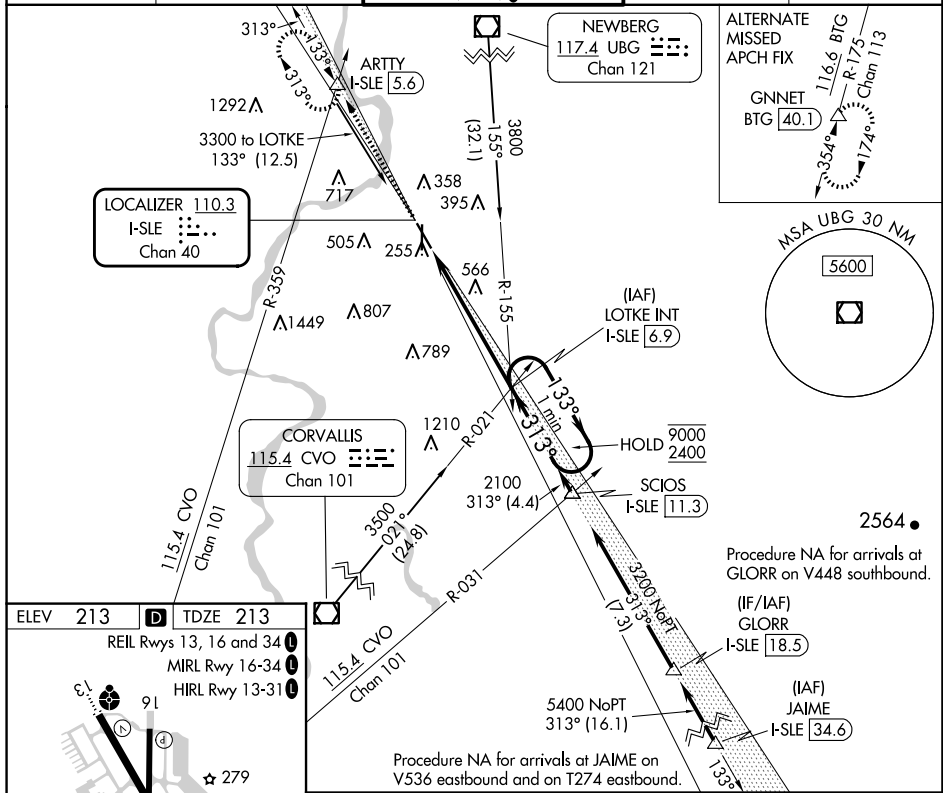
- T** Circling Rwy 16, 34 NA at night. For inop ALS, increase  
**A** S-LOC 31 Cat C/D visibility to 2½ SM.  
\*RVR 1800 authorized with use of FD or AP or HUD  
to DA (NA when using Mc Minnville altimeter setting).

MALSR



**MISSED APPROACH:** Climb to 4000 on I-SLE localizer NW course (313°) to ARTTY INT/I-SLE 5.6 DME and hold, continue climb-in-hold to 4000.

ATIS 124.55	SEATTLE CENTER 125.8 291.7	SALEM TOWER ★ 119.1 (CTAF) 0 257.2	GND CON 121.9	UNICOM 122.95
----------------	-------------------------------	---------------------------------------	------------------	------------------

[illegible]