

TACAN RWY 30L

VORTAC STL 117.4 Chn 121	APCH CRS 318°	Rwy Idg 10,679 TDZE 583 Arpt Elev 618
--	-------------------------	--

[USAF]

ST. LOUIS LAMBERT INTL (KSTL)

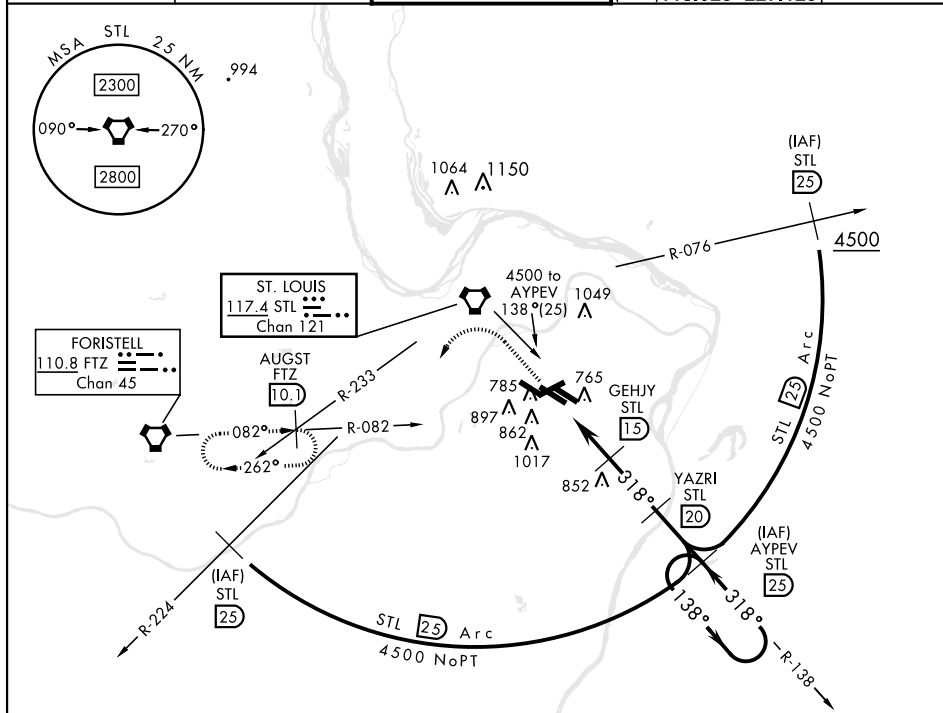


* Inoperative table does not apply.

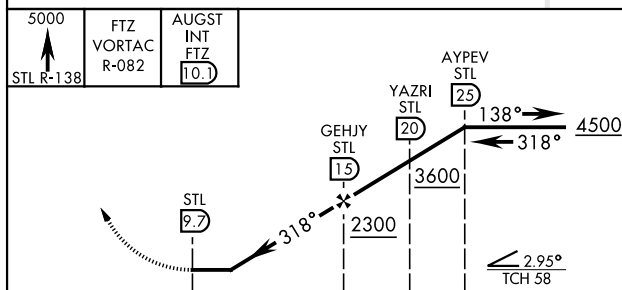


MISSED APPROACH: Climb to 5000 via STL R-138 and FTZ VORTAC R-082 to AUGST INT/FTZ 10.1 DME and hold.

ATIS		ST. LOUIS APP CON		ST. LOUIS TOWER		GND CON		CLNC DEL	
125.025	379.925	121.02	338.25	120.05	132.475	118.5	121.9	348.6	119.5
				284.6	239.275	257.7	(Inbnd)		
							(Outbnd)	121.65	377.175
							(West)	118.925	227.125



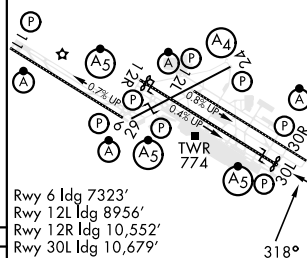
EMERG SAFE ALT 100 NM 3500



CATEGORY		A	B	C	D	E
S-30L *		1100/50	517 (500-1)	1100-1½ 517(500-1½)	1100-1¾	517 (500-1¾)
CIRCUITING		NOT AUTHORIZED				

ELEV	618	D	TDZE	583
------	-----	----------	------	-----

Rwy 6-24 7603 x 150
Rwy 11-29 9000 x 150
Rwy 12L-30R 9013 x 150
Rwy 12R-30L 11,020 x 150



Rwy 6 Idg 7323'
Rwy 12L Idg 8956'
Rwy 12R Idg 10,552'
Rwy 30L Idg 10,679'

HIRL all rwy
TDZL/CL Rwy 11-29,
12L-30R and 12R

ST. LOUIS, MISSOURI

38°45'N-90°22'W

ST. LOUIS LAMBERT INTL (KSTL)

Amdt 1 25107

TACAN RWY 30L

NC-3, 10 JUL 2025 to 07 AUG 2025