

ST. LOUIS, MISSOURI

AL-360 (FAA)

25107

WAAS CH 42500 W29A	APP CRS 303°	Rwy Idg 9000 TDZE 580 Apt Elev 618
----------------------------------------	------------------------	---------------------------------------------------------------

RNAV (GPS) Y RWY 29

ST LOUIS LAMBERT INTL (STL)

▼ For uncompensated Baro-VNAV systems, LNAV/VNAV NA below -16°C (4°F) or above 54°C (130°F). Rwy 29 helicopter visibility reduction below ½ SM NA. Simultaneous approach authorized with Rwy 30R/L. LNAV procedure NA during simultaneous operations. Use of FD or AP providing RNAV track guidance required during simultaneous operations. DME/DME RNP-0.3 NA. For inop ALS, increase LPV alt Cats visibility to RVR 6000, increase LNAV/VNAV Cat E visibility to 1½, increase LNAV Cat A and B visibility to 1, Cat E visibility to 1¾.

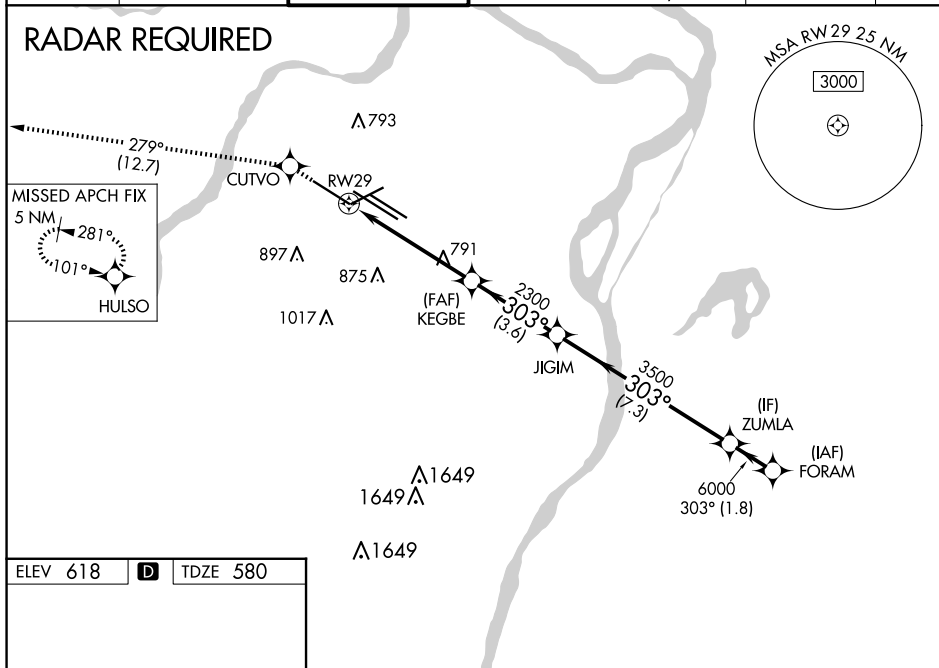
ALSF-2



MISSED APPROACH:
Climb to 3000 direct CUTVO
and on track 279° to HULSO
and hold.

D-ATIS 125.025 379.925	ST. LOUIS APP CON 132.125 360.6	ST. LOUIS TOWER 132.475 239.275	GND CON 121.9 348.6 (Inbound) 121.65 377.175 (Outbound) 118.925 227.125 (Rwy 11/29)	CLNC DEL 119.5 363.1	CPDLC
--------------------------------------------	-------------------------------------------	-------------------------------------------	-------------------------------------------------------------------------------------------------------------------	--------------------------------	-------

RADAR REQUIRED



Rwy 6-24 7603 X 150
Rwy 11-29 9000 X 150
Rwy 12L-30R 9013 X 150
Rwy 12R-30L 11020 X 150

3000 CUTVO HULSO
↑ tr 279°

VGSI and RNAV glidepath not coincident (VGSI Angle 3.00/TCH 73).

JIGIM ZUMLA FORAM
6000
303°
3500
2300
2300
1.5 3.7 NM 3.6 NM 7.3 NM 1.8 NM

CATEGORY	A	B	C	D	E
LPV DA	943/40 363 (400-¾)				
LNAV/VNAV DA	1074/60 494 (500-1¼)				
LNAV MDA	1100/40 520 (500-¾)	1100/50 520 (500-1)	1100/60 520 (500-1¼)		

HIRL all Rwys
TDZ/CL Rwys 11, 12L, 12R, 29, and 30R

ST. LOUIS, MISSOURI

Orig-D 17AUG17

38°45'N-90°22'W

ST LOUIS LAMBERT INTL (STL)

RNAV (GPS) Y RWY 29

NC-3, 10 JUL 2025 to 07 AUG 2025

NC-3, 10 JUL 2025 to 07 AUG 2025