

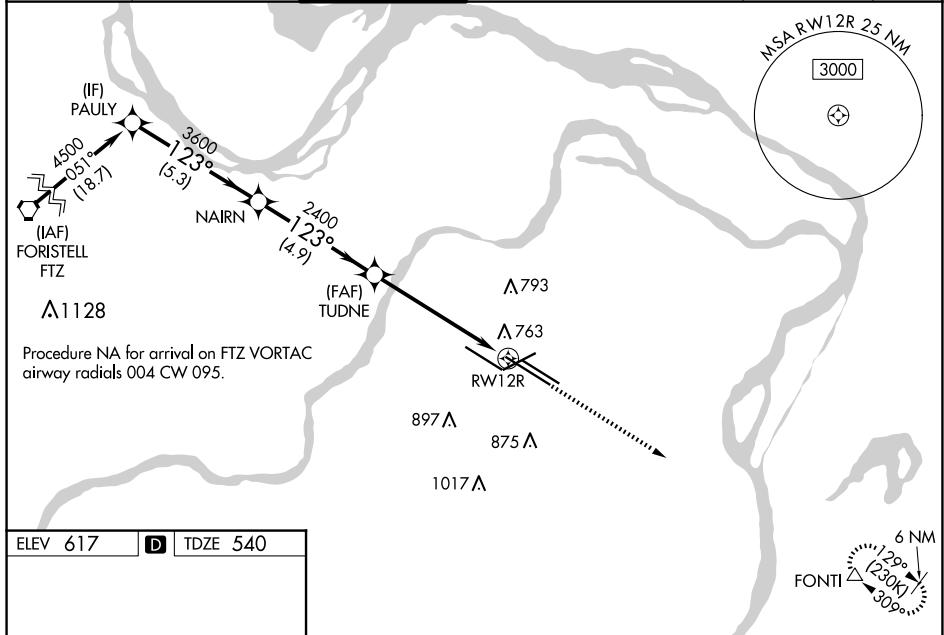
25107

RNAV (GPS) Y RWY 12R  
ST LOUIS LAMBERT INTL (STL)

**V** Rwy 12R helicopter visibility reduction below RVR 4000 NA. For uncompensated Baro-VNAV systems, LNAV/VNAV NA below -16°C or above 54°C. Simultaneous approach authorized with Rwy 11. LNAV procedure NA during simultaneous operations. Use of FD or AP required during simultaneous operations. For inop ALS, increase LPV Cat E visibility to RVR 4000, LNAV/VNAV all Cats visibility to 1% SM, LNAV Cats A/B visibility to RVR 5500, and LNAV Cat C/D/E visibility to 1% SM.

**MISSED APPROACH:** Climb to 5000 direct FONTI and hold, continue climb-in-hold to 5000.

|  |   |                                       |   |                                |       |
|--|---|---------------------------------------|---|--------------------------------|-------|
| D-ATIS<br><b>125.025</b><br><b>379.925</b> | ST. LOUIS APP CON<br><b>132.125 360.6</b> | ST. LOUIS TOWER<br><b>118.5 257.7</b> | GND CON<br><b>121.9 348.6</b> (Inbound)<br><b>121.65 377.175</b> (Outbound)<br><b>118.925 227.125</b> (Rwy 11/29) | CLNC DEL<br><b>119.5 363.1</b> | CPDLC |
|--|---|---------------------------------------|---|--------------------------------|-------|



Rwy 6-24 7603 X 150  
 Rwy 11-29 9000 X 150  
 Rwy 12L-30R 9013 X 150  
 Rwy 12R-30L 11020 X 150

123°

0.65 mi

A5 A4 A3 A2 A1 A0 A-1

TWR 772

HIRL all Rwys  
 TDZ/CL Rwys 11, 12L, 12R, 29, and 30R

| CATEGORY      |     | A                    | B | C                   | D | E |
|---------------|-----|----------------------|---|---------------------|---|---|
| LPV           | DA  | 740/18 200 (200-½)   |   |                     |   |   |
| LNAV/<br>VNAV | DA  | 1103-1¼ 563 (500-1¼) |   |                     |   |   |
| LNAV          | MDA | 1020/40 480 (500-¾)  |   | 1020/50 480 (500-1) |   |   |

ST LOUIS LAMBERT INTL (STL)  
RNAV (GPS) Y RWY 12R

NC-3, 10 JUL 2025 to 07 AUG 2025