
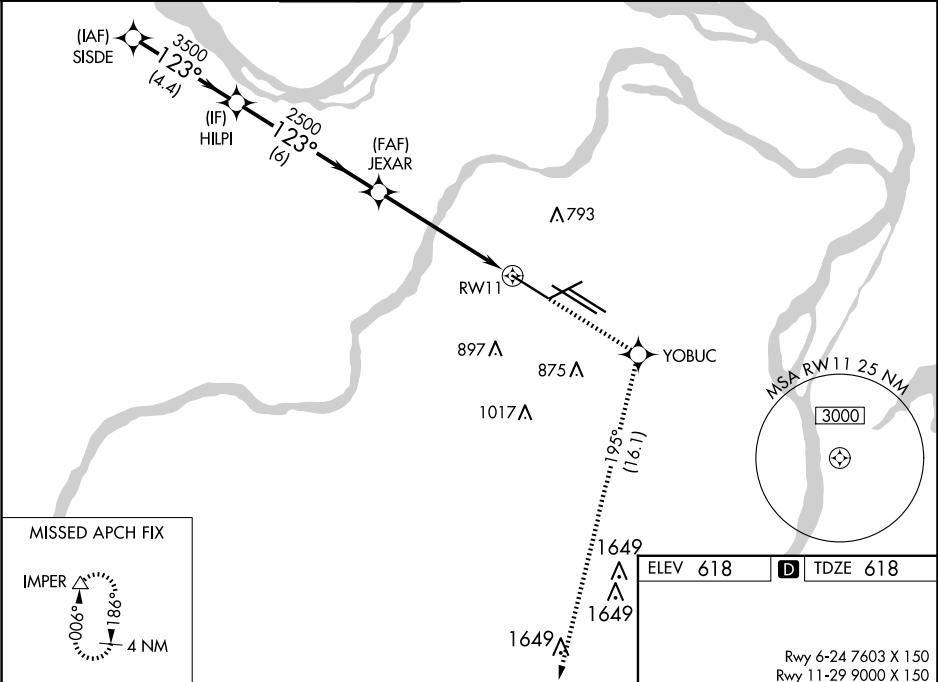


WAAS CH 82699 W11A	APP CRS 123°	Rwy Idg TDZE Apt Elev	9000 618 618
--	------------------------	-----------------------------	---

RNAV (GPS) Y RWY 11

ST LOUIS LAMBERT INTL (STL)

RNP APCH.		<div>ALSIF-2</div> <div></div>		<div>MISSED APPROACH: Climb to 3000 direct YOBUC and on track 195° to IMPER and hold.</div>	
<div><div><div><div><div><div>▼</div></div></div><div>Simultaneous approach authorized. Use of FD or AP required during simultaneous operations. LNAV procedure NA during simultaneous operations. For uncompensated Baro-VNAV systems, LNAV/VNAV NA below -16°C or above 54°C. For inop ALS, increase LPV Cat E visibility to RVR 4000 and LNAV Cat E visibility to 1¼ SM.</div></div></div></div>					
<div>D-ATIS</div> <div>125.025</div> <div>379.925</div>	<div>ST. LOUIS APP CON</div> <div>132.125 360.6</div>	<div>ST. LOUIS TOWER</div> <div>132.475 239.275</div>	<div>GND CON</div> <div>121.9 348.6 (Inbound)</div> <div>121.65 377.175 (Outbound)</div> <div>118.925 227.125 (Rwy 11/29)</div>	<div>CLNC DEL</div> <div>119.5 363.1</div>	<div>CPDLC</div>



VGSI and RNAV glidepath not coincident (VGSI Angle 3.00/TCH 67°).						3000 ↑	YOBUC ✱	tr 195°	IMPER △	