

25107

RNAV (RNP) Z RWY 12L
ST LOUIS LAMBERT INTL (STL)

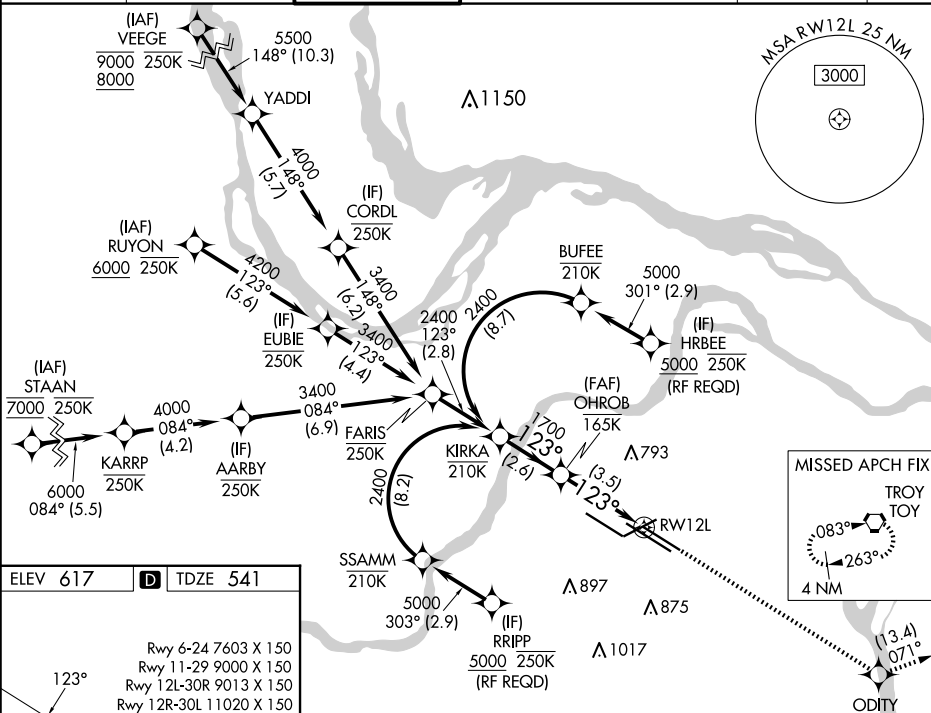
MISSED APPROACH: Climb to 3000 direct ODITY and track 071° to TOY VORTAC and hold.

T Use of FD or AP required during simultaneous operations. Simultaneous approach authorized with Rwy 11, except for arrivals at RRIPP and HRBEE. For uncompensated Baro-VNAV systems, procedure NA below -16°C or above 54°C. For inop ALS, increase RNP 0.30 all Cats visibility to 1% SM.

GND CON
121.9 348.6 (Inbound)
121.65 377.175 (Outbound)
118.925 227.125 (Rwy 11/29)

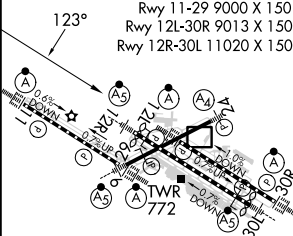
119.5 363.1

CPDLC



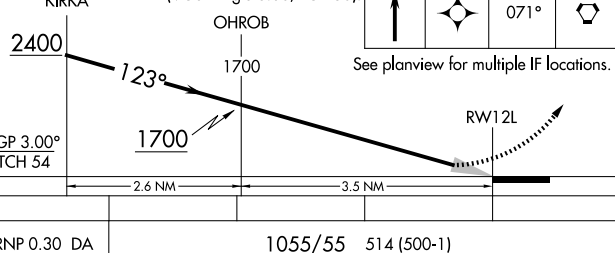
D TDZE 541

Rwy 6-24 7603 X 150
Rwy 11-29 9000 X 150
Rwy 12L-30R 9013 X 150
Rwy 12R-30L 11020 X 150



TDZ/CL Rwy's 11, 12L, 12R, 29, and 30R

VGSI and RNAV glidepath not coincident
(VGSI Angle 3.00/TCH 56)



AUTHORIZATION REQUIRED

Orig-D 17APR25

38°45'N-90°22'W

ST LOUIS LAMBERT INTL (STL)

RNAV (RNP) Z RWY 12L

NC-3, 10 JUL 2025 to 07 AUG 2025