
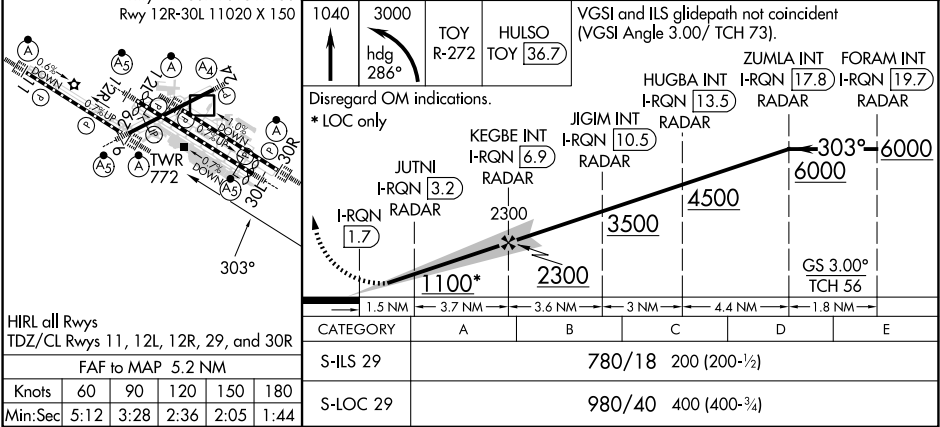
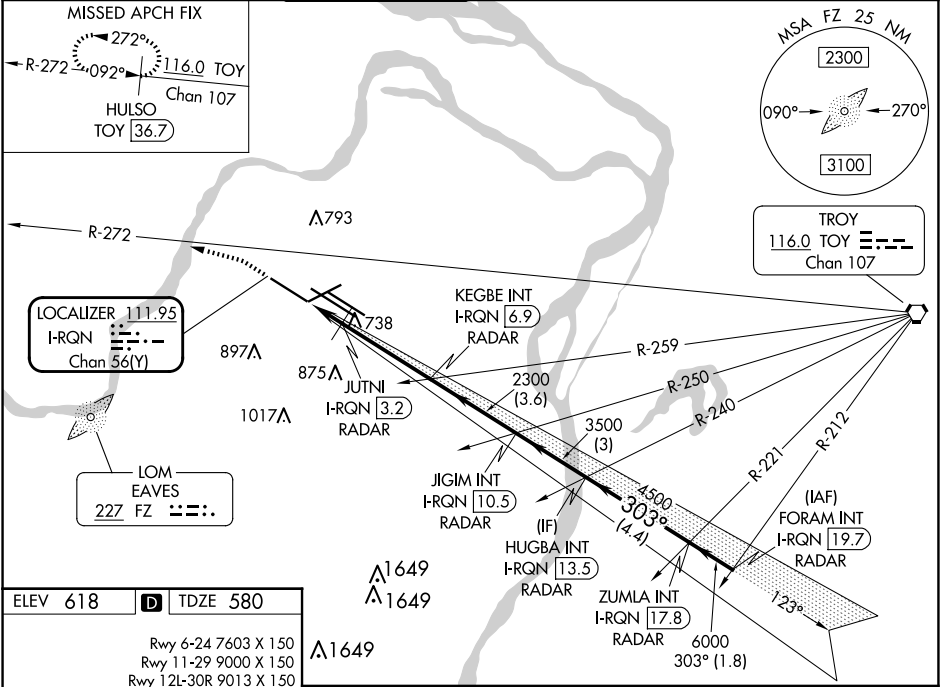


LOC/DME I-RQN <b>111.95</b> Chan <b>56(Y)</b>	APP CRS <b>303°</b>	Rwy Idg TDZE Apt Elev <b>9000</b> <b>580</b> <b>618</b>
---	------------------------	--

ILS or LOC RWY 29  
ST LOUIS LAMBERT INTL (STL)

RADAR required for procedure entry. DME or RADAR required.			ALSF-2 	MISSED APPROACH: Climb to 1040 then climbing left turn to 3000 on heading 286° and on TOY VORTAC R-272 to HULSO/TOY 36.7 DME and hold.	
▼ Simultaneous approach authorized with Rwy 30R/L. Autopilot coupled approach NA. Rwy 29 helicopter visibility reduction below RVR 4000 NA. For inop ALS, increase S-ILS Cat E visibility to RVR 4000, increase S-LOC Cats A/B visibility to RVR 5500, and Cat C/D/E to RVR 6000.					
D-ATIS 125.025 379.925	ST. LOUIS APP CON 132.125 360.6	ST. LOUIS TOWER 132.475 239.275	GND CON 121.9 348.6 (Inbound) 121.65 377.175 (Outbound) 118.925 227.125 (Rwy 11/29)		CLNC DEL 119.5 363.1 CPDLC



NC-3, 10 JUL 2025 to 07 AUG 2025

NC-3, 10 JUL 2025 to 07 AUG 2025