

LOC/DME I-LMR	APP CRS	Rwy Idg	12R	12L
109.7	123°	TDZE	10553	8956
Chan 34		Apt Elev	540	541
			617	617

ILS or LOC RWY 12R
ST LOUIS LAMBERT INTL (STL)

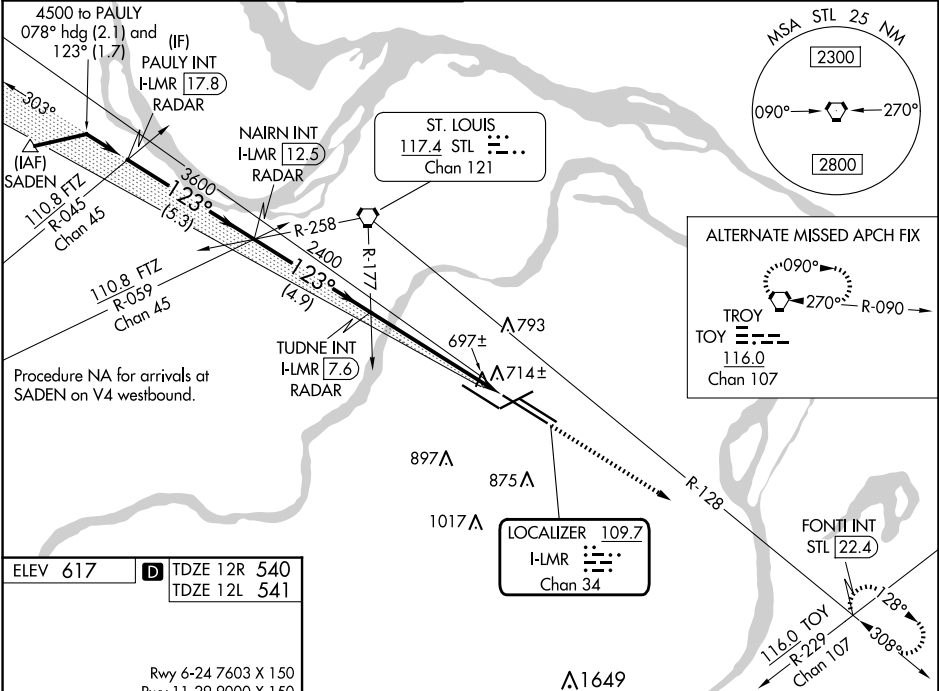
▼ LOC only: Rwy 12R helicopter visibility reduction below RVR 4000 NA. Inop table does not apply to sidestep Rwy 12L. For inop ALS, increase S-ILS 12R Cat E visibility to RVR 4000 and increase S-LOC 12R Cats A/B visibility to RVR 5500, Cats C/D/E visibility to RVR 6000. Simultaneous approach authorized with Rwy 11. Simultaneous approach authorized with Rwy 12L requires use of vertical guidance; maintain last assigned altitude until established on glide slope.

MALSR Rwy 12R

ALS-2 Rwy 12L

MISSED APPROACH: Climb to 5000 on STL VORTAC R-128 to FONTI INT/STL 22.4 DME and hold, continue climb-in-hold to 5000.

D-ATIS	ST. LOUIS APP CON	ST. LOUIS TOWER	GND CON	CINC DEL	CPDLC
125.025	132.125 360.6	118.5 257.7	121.9 348.6 (Inbound)	119.5 363.1	
379.925			121.65 377.175 (Outbound)		
			118.925 227.125 (Rwy 11/29)		



ELEV 617 D TDZE 12R 540 TDZE 12L 541

Rwy 6-24 7603 X 150
Rwy 11-29 9000 X 150
Rwy 12L-30R 9013 X 150
Rwy 12R-30L 11020 X 150

HIRL all Rwy
TDZ/CL Rwy 11, 12L, 12R, 29, and 30R

FAF to MAP 5.7 NM

Knots	60	90	120	150	180
Min:Sec	5:42	3:48	2:51	2:17	1:54

PAULY INT I-LMR 17.8 RADAR		NAIRN INT I-LMR 12.5 RADAR		TUDNE INT I-LMR 7.6 RADAR		5000 STL R-128		FONTI INT		
4500		3600		2400		3		I-LMR 1.9		
GS 3.00° TCH 54		123°		2400		I-LMR 3		I-LMR 1.9		
5.3 NM		4.9 NM		4.6 NM		1.2 NM				
CATEGORY	A		B		C		D		E	
S-ILS 12R	740/18 200 (200-½)									
S-LOC 12R	960/40 420 (400-¾)									
SIDESTEP 12L	980-1 439 (400-1)		980-1½ 439 (400-1½)		980-2 439 (400-2)					

NC-3, 10 JUL 2025 to 07 AUG 2025

NC-3, 10 JUL 2025 to 07 AUG 2025