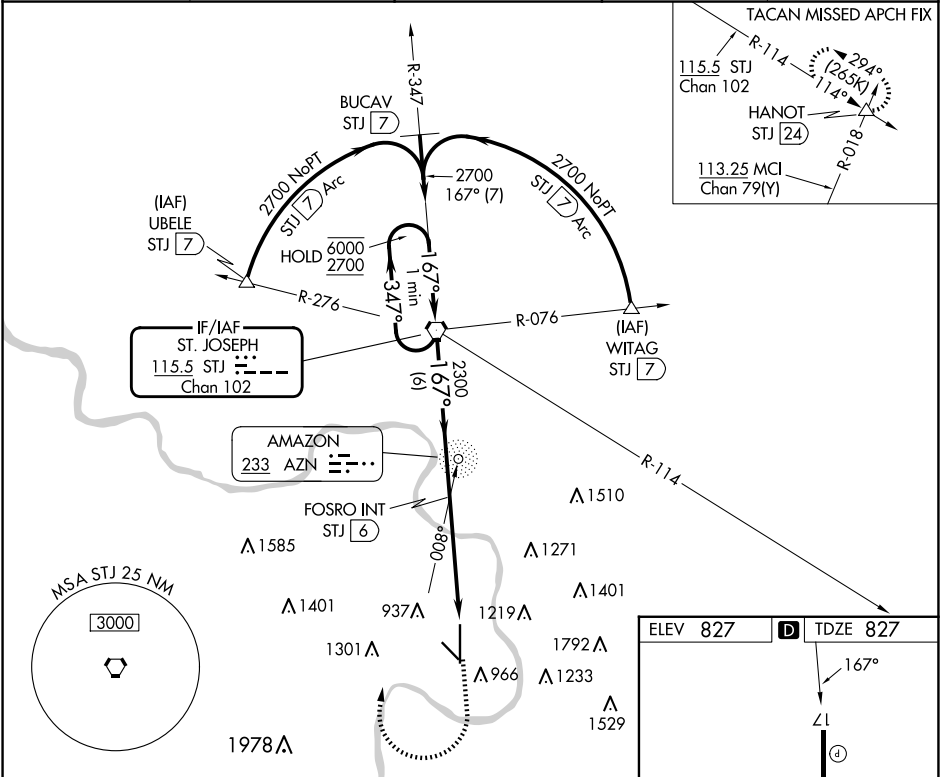


VORTAC STJ	APP CRS	Rwy Ldg	8061
115.5	167°	TDZE	827
Chan 102		Apt Elev	827

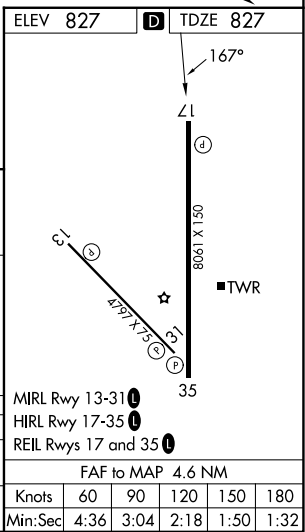
VOR or TACAN RWY 17
ROSECRANS MEML (STJ)

ADF or DME required.	MISSED APPROACH: Climb to 1500 then climbing right turn to 2700 direct STJ VORTAC and hold. (TACAN aircraft climb to 2300 then climbing left turn to 3100 direct HANOT INT/STJ 24 DME and hold NW, LT, 114° inbound, GPS required).
<div><div></div><div>Misssed approach to STJ VORTAC NA for Cat E aircraft.</div><div>ASR/PAR</div></div>	

ATIS 125.05	ST. JOSEPH APP CON * 120.35 360.8	ST. JOSEPH TOWER * 126.9 (CTAF) 239.0	GND CON 121.9	UNICOM 122.95
----------------	--------------------------------------	--	------------------	------------------



One Minute Holding Pattern		*STJ VORTAC	1500	2700	STJ
6000 ← 347°					
2700 → 167°					
*Course reversal NA for Cat E aircraft.					
6 NM		2.7 NM	1.9 NM		
CATEGORY	A	B	C	D	E
S-17	1500-1	673 (700-1)	1500-1 7/8	673 (700-1 7/8)	
CIRCLING	1500-1	673 (700-1)	1620-2 1/4 793 (800-2 1/4)	1640-2 3/4 813 (900-2 3/4)	1760-3 933 (1000-3)



NC-3, 10 JUL 2025 to 07 AUG 2025

NC-3, 10 JUL 2025 to 07 AUG 2025