



ST. JOSEPH, MISSOURI

AL-359 (FAA)

25163

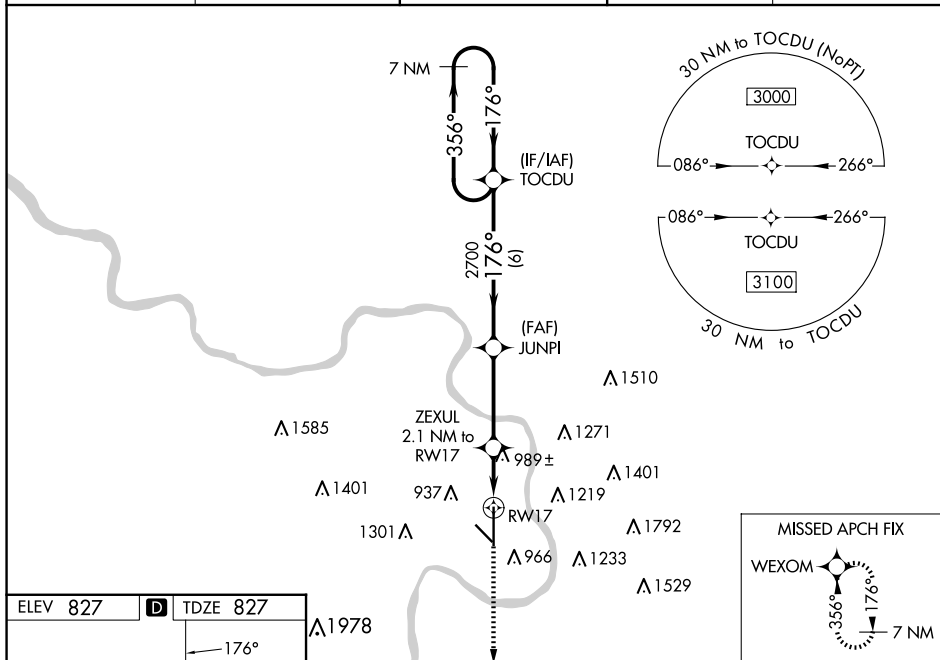
WAAS CH 70535 W17A	APP CRS 176°	Rwy Ldg 8061 TDZE 827 Apt Elev 827
--	------------------------	---

RNAV (GPS) RWY 17
ROSECRANS MEML (STJ)

  ASR/PAR	<p>For uncompensated Baro-VNAV systems, LNAV/VNAV NA below -20°C (-4°F) or above 54°C (130°F). DME/DME RNP-0.3 NA. Helicopter visibility reduction below ¾ SM NA.</p> <p>Baro-VNAV and VDP NA when using Kansas City Init altimeter setting. When local altimeter setting not received, use Kansas City Init altimeter setting and increase all DA 97 feet, and LPV visibility ½ mile all Cats, LNAV/VNAV visibility ¾ mile all Cats; increase all MDA 100 feet and LNAV Cat C/D/E visibility ½ mile, Circling Cat C ½ mile, Cat D ¼ mile.</p>
---	--

MISSED APPROACH:
Climb to 3100 direct
WEXOM and hold.

ATIS 125.05	ST. JOSEPH APP CON ★ 120.35 360.8	ST. JOSEPH TOWER ★ 126.9 (CTAF) 239.0	GND CON 121.9	UNICOM 122.95
----------------	--------------------------------------	--	------------------	------------------

[illegible]

CATEGORY	A	B	C	D	E
LPV DA		1027- $\frac{3}{4}$	200 (200- $\frac{3}{4}$)		
RNAV/ VNAV	DA	1077- $\frac{3}{4}$	250 (300- $\frac{3}{4}$)		
RNAV MDA	1240-1	413 (500-1)	1240-1 $\frac{1}{8}$	413 (500-1 $\frac{1}{8}$)	
C CIRCLING	1400-1 573 (600-1)	1420-1 593 (600-1)	1620-2 $\frac{1}{4}$ 793 (800-2 $\frac{1}{4}$)	1640-2 $\frac{3}{4}$ 813 (900-2 $\frac{3}{4}$)	1760-3 933 (1000-3)

ST. JOSEPH, MISSOURI
Amdt 1A 24JUL14

39°46'N-94°55'W

ROSECRANS MEML (STJ)
RNAV (GPS) RWY 17

NC-3, 10 JUL 2025 to 07 AUG 2025

NC-3, 10 JUL 2025 to 07 AUG 2025