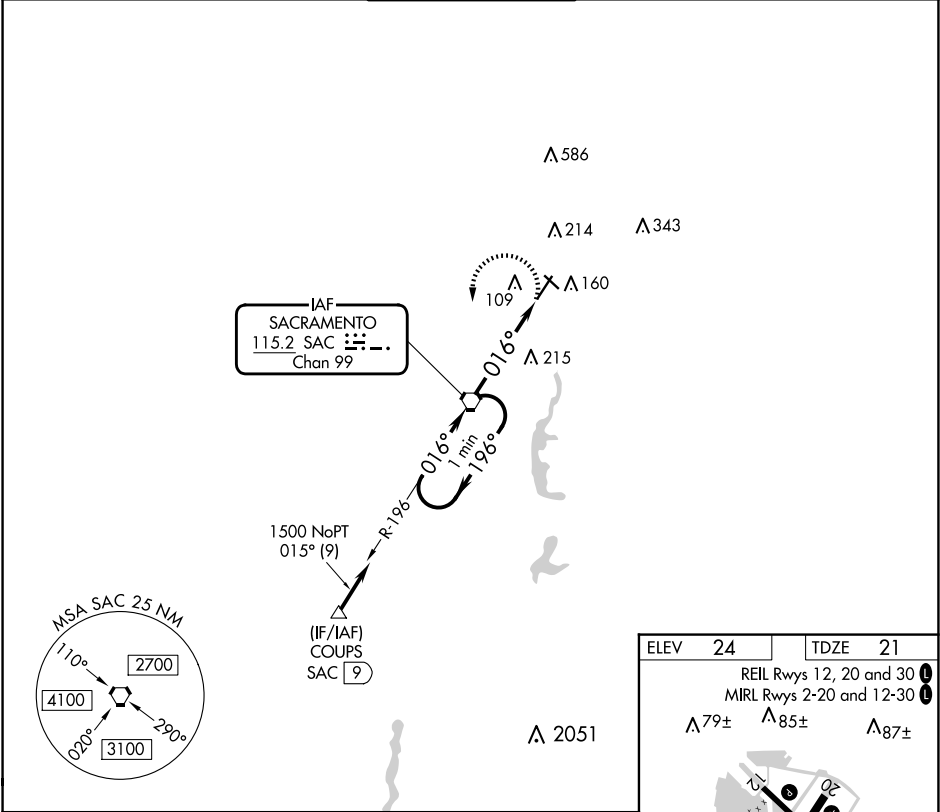


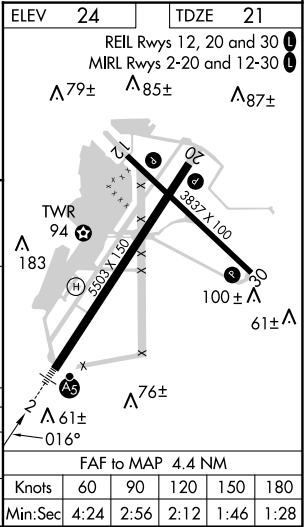
VORTAC SAC	APP CRS	Rwy Idg	5503
115.2	016°	TDZE	21
Chan 99		Apt Elev	24

VOR RWY 2
SACRAMENTO EXEC (SAC)

<div><div></div><div></div></div> <div>When local altimeter setting not received, use Sacramento Intl altimeter setting and increase all MDAs 40 feet and Circling Cat D visibility ¼ SM.</div>		<div>MALSR</div> <div><div></div><div></div></div>	MISSED APPROACH: Climbing left turn to 1600 direct SAC VORTAC and hold.	
ATIS 125.5	NORCAL APP CON 125.25 257.9	EXEC TOWER★ 119.5 (CTAF) 0 278.8	GND CON 125.0	UNICOM 122.95



One Minute Holding Pattern		SAC VORTAC		1600	SAC
1500		196°		016°	
		196°		016°	
		4.4 NM			
CATEGORY	A	B	C	D	
S-2	520-1½	499 (500-1½)	520-1	499 (500-1)	
CIRCLING	520-1	496 (500-1)	560-1½ 536 (600-1½)	800-2½ 776 (800-2½)	



SW-2, 10 JUL 2025 to 07 AUG 2025

SW-2, 10 JUL 2025 to 07 AUG 2025