

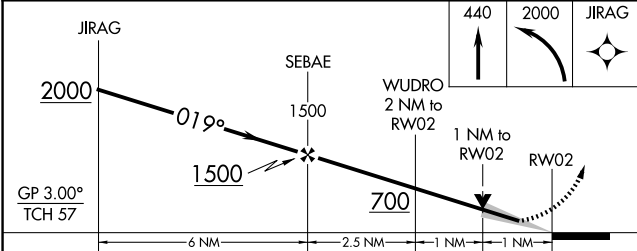
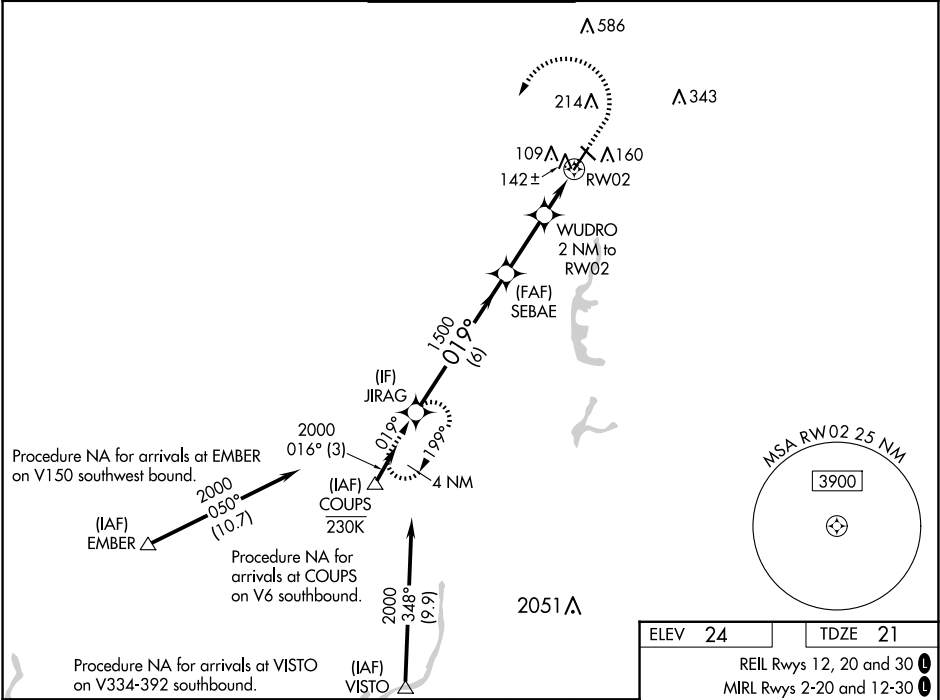
WAAS CH 62810 W02A	APP CRS 019°	Rwy Idg 5503 TDZE 21 Apt Elev 24
--	------------------------	---

RNAV (GPS) RWY 2

SACRAMENTO EXEC (SAC)

RNP APCH-GPS. ▼ ▲ For uncompensated Baro-VNAV systems, LNAV/VNAV NA below -1°C or above 54°C. For inop ALS, increase LNAV/VNAV all Cats visibility to 7⁄8 SM, increase LNAV all Cats visibility to 1 SM.	MALSR 	MISSED APPROACH: Climb to 440 then climbing left turn to 2000 direct JIRAG and hold.
--	-----------	--

ATIS 125.5	NORCAL APP CON 125.25 257.9	EXEC TOWER ★ 119.5 (CTAF) 0 278.8	GND CON 125.0	UNICOM 122.95
----------------------	---------------------------------------	---	-------------------------	-------------------------



CATEGORY	A	B	C	D
LPV DA		221-1⁄2	200 (200-1⁄2)	
LNAV/VNAV DA		304-1⁄2	283 (300-1⁄2)	
LNAV MDA	400-1⁄2	379 (400-1⁄2)	400-5⁄8	379 (400-5⁄8)
CIRCLING	500-1 476 (500-1)	520-1 496 (500-1)	560-11⁄2 536 (600-11⁄2)	800-21⁄2 776 (800-21⁄2)

