

ILS Z or LOC Z RWY 22L
SACRAMENTO MATHER (MHR)

MISSED APPROACH: Climb to 1000, then climbing left turn to 3500 on heading 090° and SAC VORTAC R-058 to COSKA INT/ SAC 24.2 DME and hold, continue climb-in-hold to 3500.



PALISADES
113.2 SWR
Chan 79

11200
21.4°
(15)

ACEKO
SWR 15

8100
21.4°
(15.2)

R-214

(IAF)
OHDEE
I-MHR [32.1]

ROUTING TO OHDEE
(not to scale)

Procedure NA for arrivals at
COLOM on V6 northeast bound.

BAB
Chan 23
(108.6)

R-119

6100 NoPT
172° hdg (2.6)
and 221° (4.8)

HOLD
8100
6100

(IAF)
COLOM
HNW [8.9]

8100
221°
(15)

ESDIE
I-MHR [27.1]

6100 NoPT
221° (6.1)

6100 NoPT

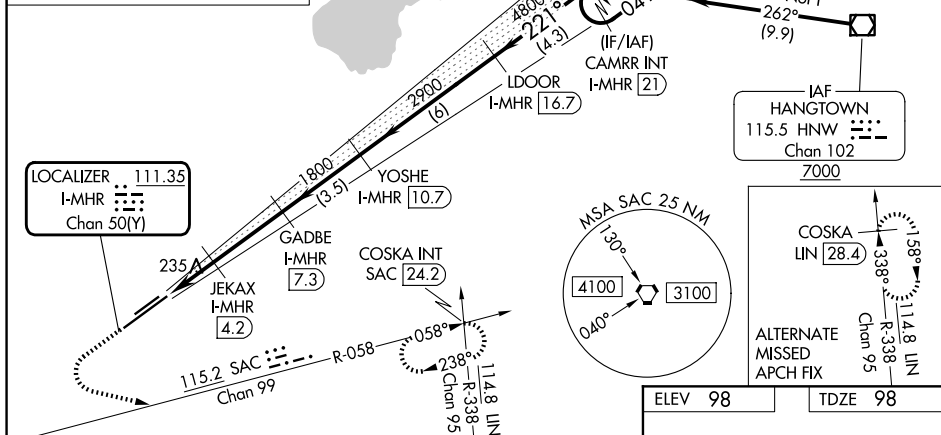
R-262

1 min

(IAF)
OHDEE
I-MHR [32.1]

SEE INSET FOR
ROUTING TO
OHDEE

041°



ELEV 98 TDZE 98

221°

6081 X 150

11301 X 150

TWR 211 ±

HIRL Rwy 4R-22L

SW-2, 10 JUL 2025 to 07 AUG 2025