

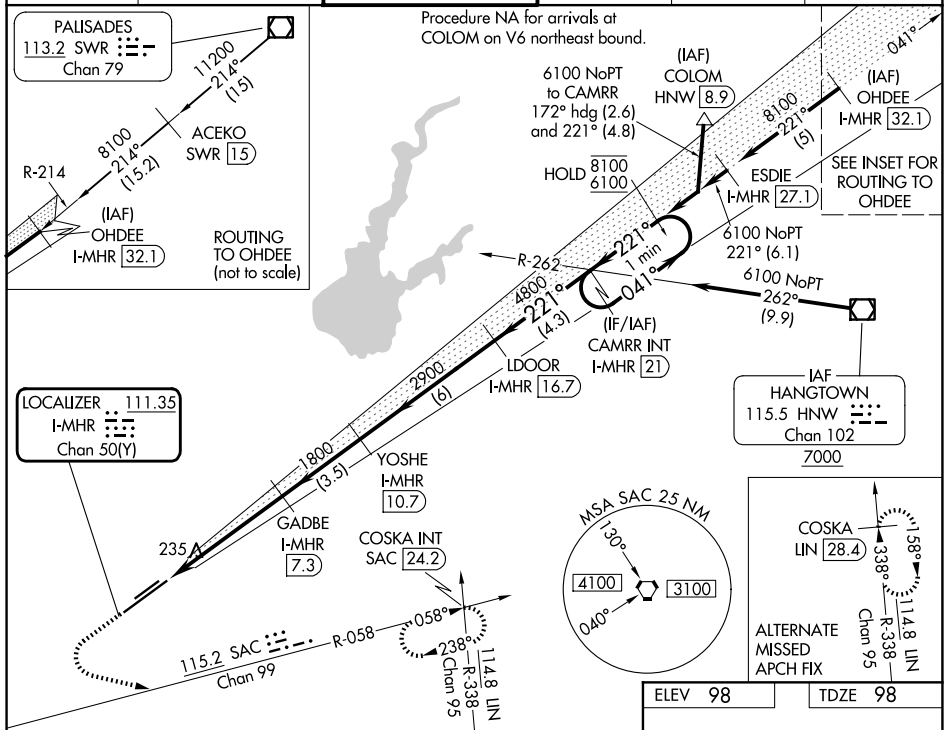
ILS Z RWY 22L (SA CAT I & II)
SACRAMENTO MATHER (MHR)

Requires specific OPSPEC, MSPEC, or LOA approval.
Procedure NA when tower closed.



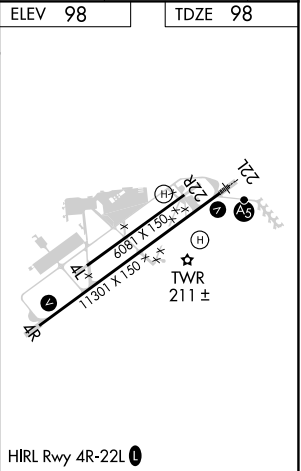
MISSED APPROACH: Climb to 1000, then climbing left turn to 3500 on heading 090° and SAC VORTAC R-058 to COSKA INT/SAC 24.2 DME and hold, continue climb-in-hold to 3500.

ATIS 118.325	NORCAL APP CON 127.4 317.5	MATHER TOWER ★ 120.65 (CTAF) 0 282.25	GND CON 121.85 307.9	CLNC DEL 121.85 307.9	UNICOM 122.95
-----------------	-------------------------------	--	-------------------------	--------------------------	------------------



1000 ↑	3500 hdg 090°	SAC R-058	COSKA INT	VGSI and ILS glidepath not coincident (VGSI Angle 3.00/TCH 50).			
				CAMR INT I-MHR 21	One Minute Holding Pattern		
CATEGORY	A	B	C	D			
S-ILS 22L	SA CAT I		RA 136/14 150	DA 248			
S-ILS 22L	SA CAT II		RA 95/12 100	DA 198			

SA CATEGORY I & II ILS - SPECIAL AIRCREW
& AIRCRAFT CERTIFICATION REQUIRED



SW-2, 10 JUL 2025 to 07 AUG 2025

SW-2, 10 JUL 2025 to 07 AUG 2025