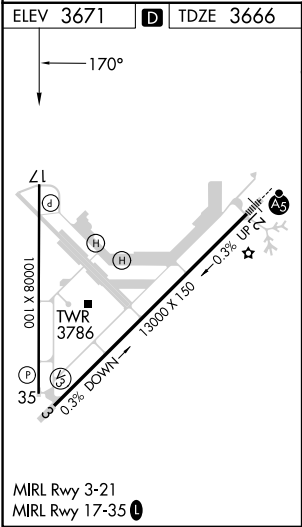
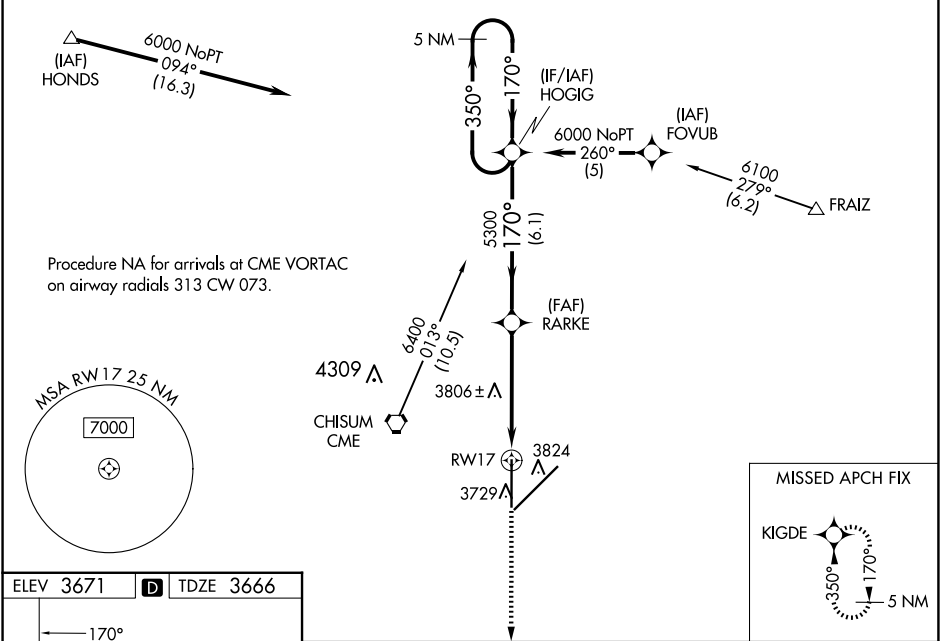


WAAS CH 65702 W17A	APP CRS 170°	Rwy Idg 10008 TDZE 3666 Apt Elev 3671
--	------------------------	--

RNAV (GPS) RWY 17

ROSWELL AIR CENTER (ROW)

RNP APCH - GPS.		MISSED APPROACH: Climb to 6000 direct KIGDE and hold.			
<div>▼ ▲ ASR</div> <div>For uncompensated Baro-VNAV systems, LNAV/VNAV NA below -22°C or above 41°C . When local altimeter setting not received, use Artesia altimeter setting: increase LPV DA to 3996 feet and all visibilities ¼ SM; increase LNAV/VNAV DA to 4083 feet; increase all MDAs 80 feet and visibility LNAV Cat C ¼ SM and Circling Cat D ¼ SM. VDP and Baro-VNAV NA when using Artesia altimeter setting.</div>					
ATIS 128.45 306.2	ROSWELL APP CON* 119.6 239.0	ROSWELL TOWER* 118.5(CTAF) 0 233.7	GND CON 121.9 348.6	CLNC DEL 132.875 282.25	UNICOM 122.95



6000

↑

KIGDE

✦

HOGIG

5 NM Holding Pattern

350° →

← 170°

6000

RARKE

1.3 NM to RW17

1.3 NM

3.6 NM

6.1 NM

5300

170°

GP 3.00° TCH 50

RW17

↻

CATEGORY	A	B	C	D
LPV DA	3916-3⁄4 250 (300-3⁄4)			
LNAV/VNAV DA	4003-1 1⁄4 337 (400-1 1⁄4)			
LNAV MDA	4120-1	454 (500-1)	4120-1 1⁄4 454 (500-1 1⁄4)	4120-1 1⁄2 454 (500-1 1⁄2)
CIRCLING	4140-1 1⁄4	469 (500-1 1⁄4)	4140-1 1⁄2 469 (500-1 1⁄2)	4300-2 629 (700-2)