

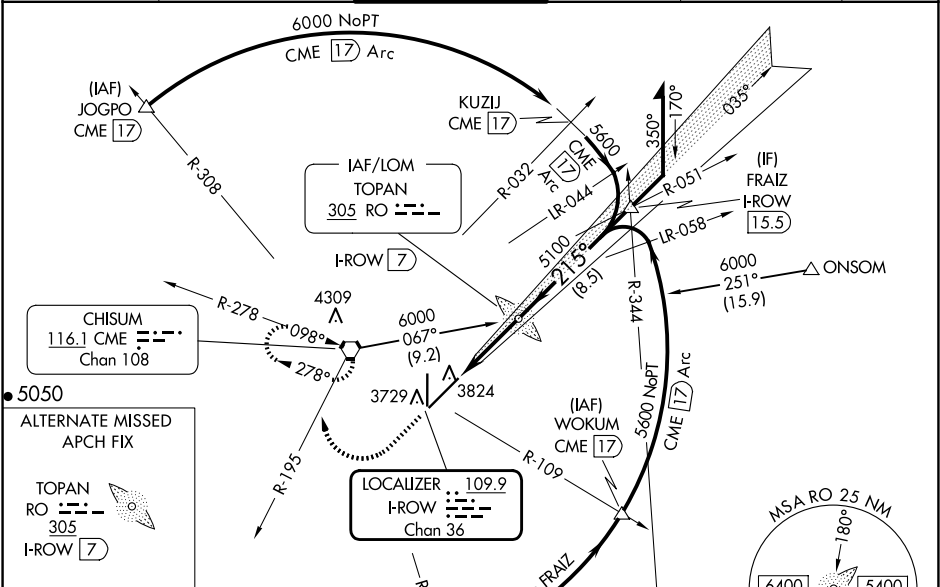
LOC/DME I-ROW	APP CRS	Rwy Idg	13000
109.9	215°	TDZE	3633
Chan 36		Apt Elev	3671

ILS Z or LOC Z RWY 21

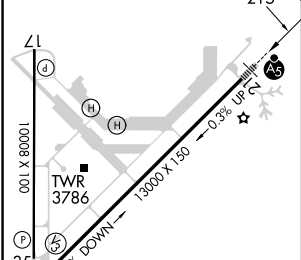
ROSWELL AIR CENTER (ROW)

ADF or DME required.		MALSR	MISSED APPROACH: Climb to 5000 then climbing right turn to 6000 on CME VORTAC R-195 to CME VORTAC and hold, continue climb-in-hold to 6000.
VDP NA when using Artesia altimeter setting. When local altimeter setting not received, use Artesia altimeter setting: increase DA to 3913 feet; increase all MDAs 80 feet and S-LOC 21 visibility Cat C/D ¾ SM and Circling visibility Cat D ¼ SM. For inop ALS when using Artesia altimeter setting, increase ILS all Cats visibility to ¾ SM and LOC Cats C/D to 1 ¾ SM.	ASR		

ATIS	ROSWELL APP CON*	ROSWELL TOWER*	GND CON	CLNC DEL	UNICOM
128.45 306.2	119.6 239.0	118.5(CTAF) 0 233.7	121.9 348.6	132.875 282.25	122.95



ELEV 3671	TDZE 3633
-----------	-----------



FAF to MAP 4.6 NM					
Knots	60	90	120	150	180
Min:Sec	4:36	3:04	2:18	1:50	1:32

Use I-ROW DME when on the localizer course.				
1.1 NM 3.5 NM				
CATEGORY	A	B	C	D
S-ILS 21	3833-½ 200 (200-½)			
S-LOC 21	4020-½ 387 (400-½)		4020-⅝ 387 (400-⅝)	
CIRCLING	4140-1 469 (500-1)		4140-1½ 469 (500-1½)	
			4300-2 629 (700-2)	