

VOR/DME OCS 116.0 Chan 107	APP CRS 255°	Rwy Idg 10002 TDZE 6765 Apt Elev 6765
--	------------------------	--

VOR/DME RWY 27
SOUTHWEST WYOMING RGNL (RKS)

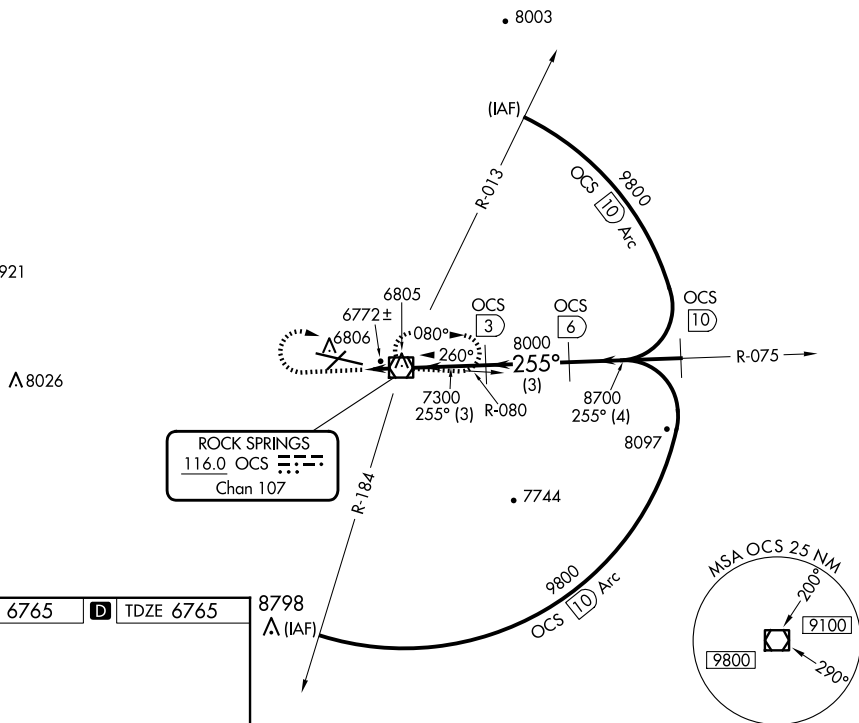


Inoperative table does not apply to Cat D.

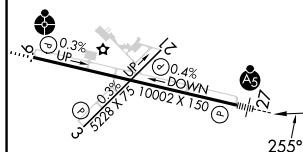


MISSED APPROACH: Climb to 7700, then climbing right turn to 9100 direct OCS VOR/DME and hold.

AWOS-3 118.375	SALT LAKE CENTER 124.35 353.5	UNICOM 122.8 (CTAF) ①
--------------------------	---	---------------------------------



ELEV 6765	D	TDZE 6765
-----------	----------	-----------



CATEGORY	A	B	C	D
S-27	7040-1/2 275 (300-1/2)			7040-1 275 (300-1)
CIRCLING	7140-1 375 (400-1)	7220-1 455 (500-1)	7220-1 1/2 455 (500-1 1/2)	NA