

VOR/DME OCS 116.0 Chan 107	APP CRS 085°	Rwy Idg 10002 TDZE 6741 Apt Elev 6765
--	------------------------	--

VOR RWY 9
SOUTHWEST WYOMING RGNL (RKS)

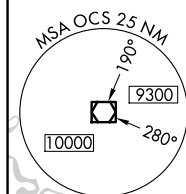
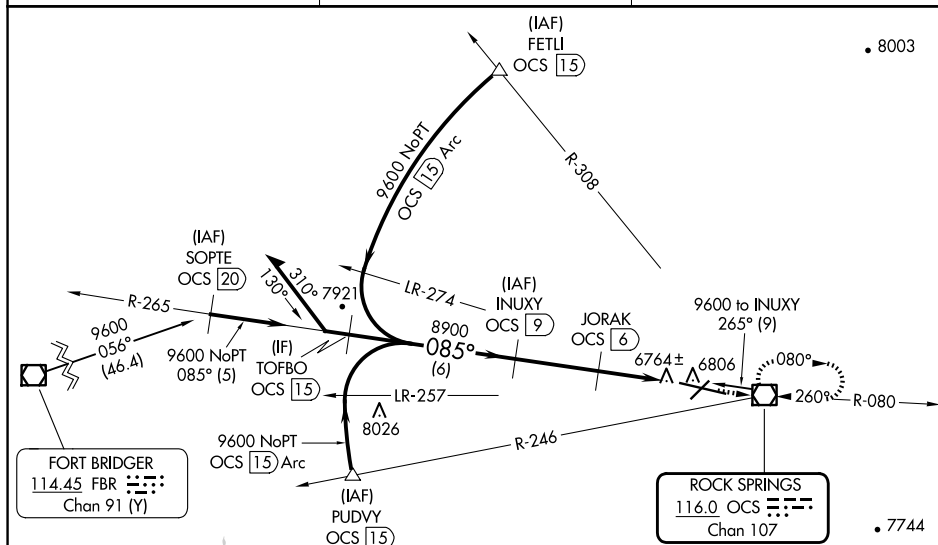
DME required.

ODALS

MISSED APPROACH: Climb to 9300 direct OCS
VOR/DME and hold, continue climb-in-hold to 9300.

AWOS-3
118,375

SALT LAKE CENTER
124.35 353.5

UNICOM
122.8 (CTAF) L

8798	A	ELEV 6765	D	TDZE 6741
------	---	-----------	---	-----------


VGSI and descent angles not coincident
(VGSI Angle 3.00/TCH 50).

Remain
within 10 NM

9600

15°


JORAK
OCF

9300 ↑	OCS 
-----------	--

OCS
3.8
|
OCS
3

3

0.8	
-----	--

CATEGORY	A	B	C	D
S-9	7020- $\frac{3}{4}$ 279 (300- $\frac{3}{4}$)			7020-1 279 (300-1)
 CIRCLING	7140-1 375 (400-1)	7220-1 455 (500-1)	7220-1 $\frac{1}{2}$ 455 (500-1 $\frac{1}{2}$)	7540-2 $\frac{1}{2}$ 775 (800-2 $\frac{1}{2}$)

MIRL Rwy 3-21
HIRL Rwy 9-27 **L**
REIL Rwy 3 and 21 **L**

ROCK SPRINGS, WYOMING
Amdt 3B 30JAN20

SOUTHWEST WYOMING RGNL (RKS)
VOR RWY 9

41°36'N-109°04'W