

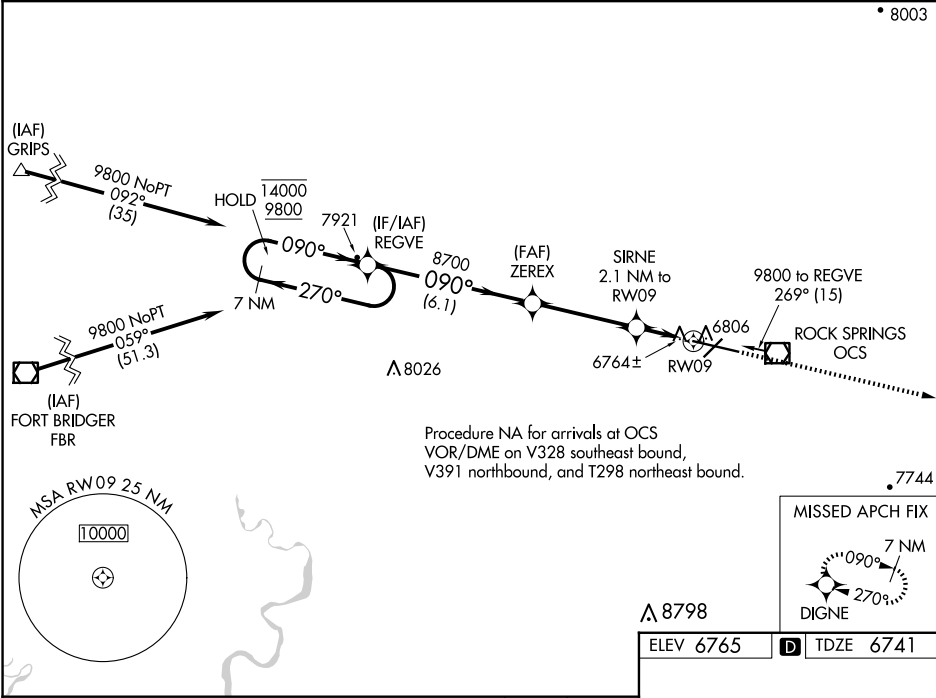
WAAS CH <b>66016</b> <b>W09A</b>	APP CRS <b>090°</b>	Rwy Idg <b>10002</b> TDZE <b>6741</b> Apt Elev <b>6765</b>
--	------------------------	--

RNAV (GPS) RWY 9

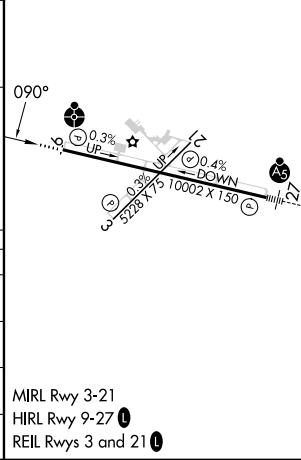
SOUTHWEST WYOMING RGNL (RKS)

RNP APCH.	ODALS	MISSED APPROACH: Climb to 9600 direct DIGNE and hold.
▼ For uncompensated Baro-VNAV systems, LNAV/VNAV NA below -28°C or above 45°C .		

AWOS-3 <b>118.375</b>	SALT LAKE CENTER <b>124.35 353.5</b>	UNICOM <b>122.8 (CTAF) 0</b>
--------------------------	---	---------------------------------



7 NM Holding Pattern				
REGVE				
ZEREX				
SIRNE 2.1 NM to RW09				
*0.8 NM to RW09				
*7440				
GP 3.00° TCH 50				
6.1 NM 3.8 NM 1.3 NM 0.8				
CATEGORY	A	B	C	D
LPV DA	6941-¾ 200 (200-¾)			
LNAV/VNAV DA	7034-¾ 293 (300-¾)			
LNAV MDA	7040-¾ 299 (300-¾)			7040-1 299 (300-1)
CIRCLING	7140-1 375 (400-1)	7220-1 455 (500-1)	7220-1½ 455 (500-1½)	7540-2½ 775 (800-2½)



NW-1, 10 JUL 2025 to 07 AUG 2025

NW-1, 10 JUL 2025 to 07 AUG 2025