

ROCHESTER, NEW YORK

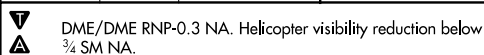
AL-351 (FAA)

24305

WAAS CH 72934 W25A	APP CRS 256°	Rwy Idg 4000 TDZE 547 Apt Elev 559
--	------------------------	---

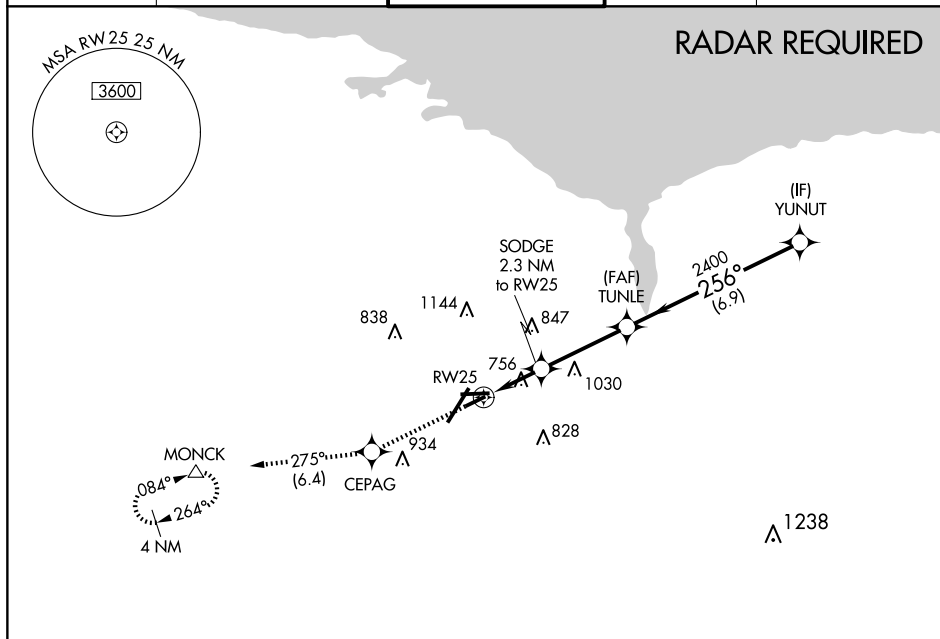
RNAV (GPS) RWY 25

FREDERICK DOUGLASS/GREATER ROCHESTER INTL (ROC)

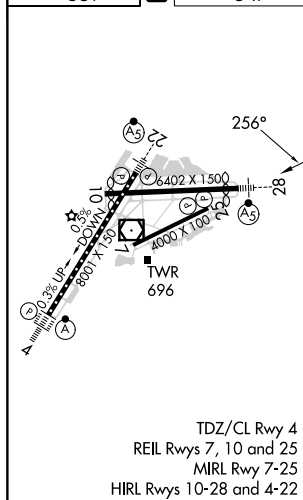


MISSED APPROACH: Climb to 3000 direct CEPAG and on track 275° to MONCK and hold.

ATIS 124.825	ROCHESTER APP CON 119.55 269.6	ROCHESTER TOWER 118.3 254.3	GND CON 121.7	CLNC DEL 118.8 343.65
-----------------	-----------------------------------	--------------------------------	------------------	--------------------------



ELEV 559	D	TDZE 547
----------	----------	----------



3000 ↑	CEPAG ✦	tr 275°	MONCK △
-----------	------------	------------	------------

Diagram showing the profile view of the runway with elevations and distances:

- RW25: 1300
- SODGE: 2.3 NM to RW25
- TUNLE: 2400
- YUNUT: 3000
- Slope: 256°
- 3.00° TCH 40
- Distances: 1.4, 0.9, 3.4 NM, 6.9 NM

CATEGORY	A	B	C	D
LP MDA	1020-1	473 (500-1)	1020-1 $\frac{3}{8}$	473 (500-1 $\frac{3}{8}$)
LPNAV MDA	1040-1	493 (500-1)	1040-1 $\frac{3}{8}$	493 (500-1 $\frac{3}{8}$)
C CIRCLING	1060-1	501 (600-1)	1500-2 $\frac{3}{4}$ 941 (1000-2 $\frac{3}{4}$)	1500-3 941 (1000-3)

ROCHESTER, NEW YORK
Amdt 1A 05MAR15

FREDERICK DOUGLASS/GREATER ROCHESTER INTL (ROC)
43°07'N-77°40'W
RNAV (GPS) RWY 25

NE-2, 10 JUL 2025 to 07 AUG 2025

NE-2, 10 JUL 2025 to 07 AUG 2025