

ROCHESTER, NEW YORK

AL-351 (FAA)

24305

LOC I-MCU <b><u>110.7</u></b>	APP CRS <b>044°</b>	Rwy Idg TDZE Apt Elev	<b>8001</b> <b>535</b> <b>559</b>
----------------------------------	------------------------	-----------------------------	---

ILS RWY 4 (SA CAT I)

FREDERICK DOUGLASS/GREATER ROCHESTER INTL (ROC)

**T**  
**A** Requires specific OPSPEC, MSPEC, or LOA approval and use of the HUD to DA.

ALSF-2

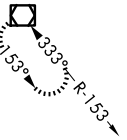


**MISSED APPROACH:** Climb to 1100 then climbing right turn to 3000 on heading 135° and ROC VOR/DME R-096 to BREIT INT/ROC 5.3 DME and hold, continue climb-in-hold to 3000.

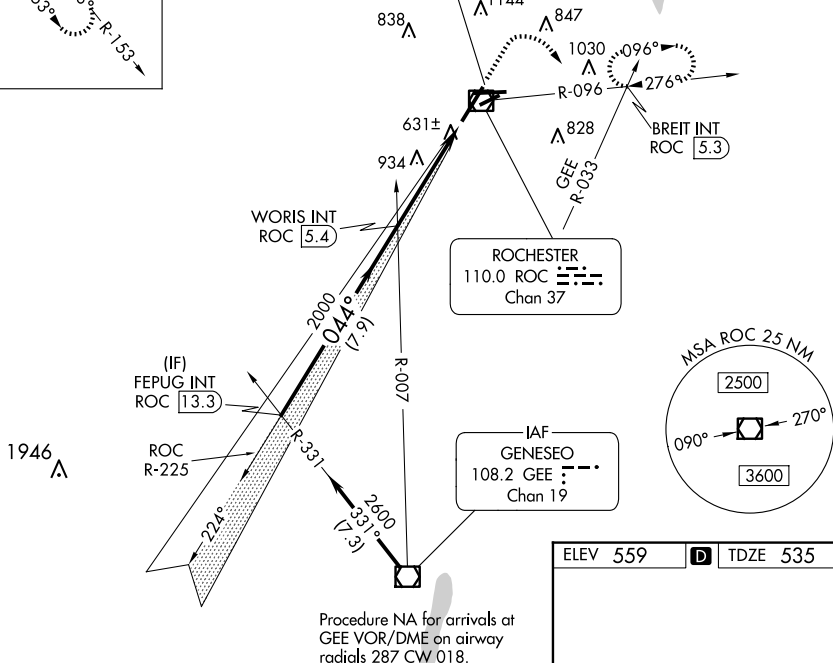
ATIS 124.825	ROCHESTER APP CON 119.55 269.6	ROCHESTER TOWER 118.3 254.3	GND CON 121.7	CLNC DEL 118.8 343.65
-----------------	-----------------------------------	--------------------------------	------------------	--------------------------

### ALTERNATE MISSED APCH FIX

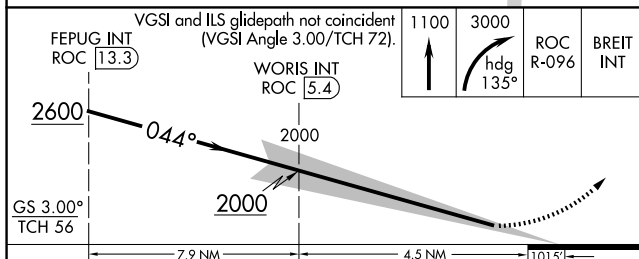
GENESEO.  
GEE :  
108.2  
Chan 19



LOCALIZER 110.7  
I-MCU 110.7

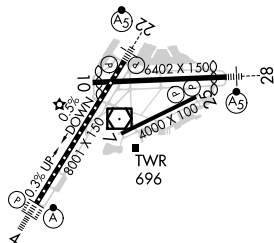


ELEV 559	<b>D</b>	TDZE 535
----------	----------	----------



CATEGORY	A	B	C	D
S-ILS 4	RA 157/14 150 DA 685			

SA CATEGORY I ILS - SPECIAL AIRCREW  
& AIRCRAFT CERTIFICATION REQUIRED



TDZ/CL Rwy 4  
REIL Rwys 7, 10 and 25  
MIRL Rwy 7-25  
HIRL Rwys 10-28 and 4-22

ROCHESTER, NEW YORK

Amdt 21C 31OCT24

FREDERICK DOUGLASS/GREATER ROCHESTER INTL (ROC)

43°07'N-77°40'W

**ILS RWY 4 (SA CAT I)**

NE-2, 10 JUL 2025 to 07 AUG 2025