

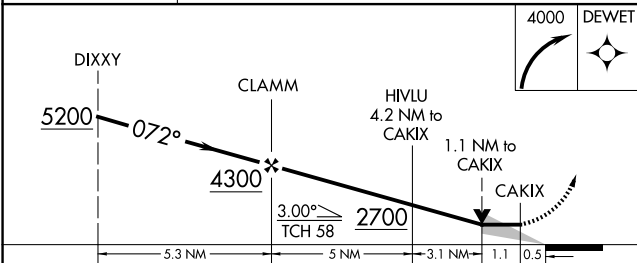
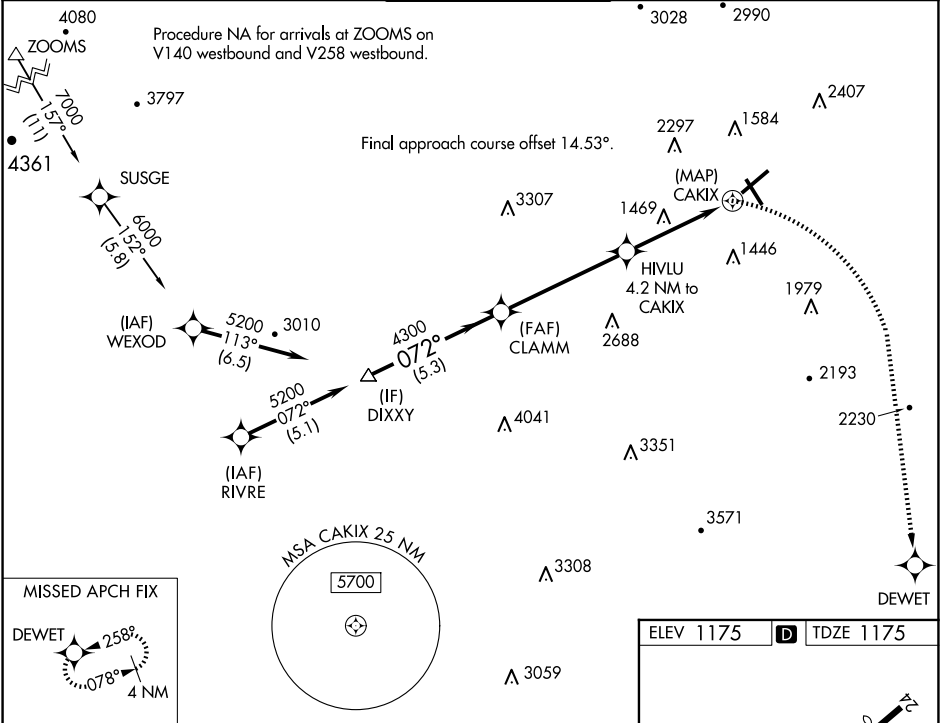
APP CRS	Rwy Ldg	6800
072°	TDZE	1175
	Apt Elev	1175

RNAV (GPS) Y RWY 6

ROANOKE/BLACKSBURG RGNL (WOODRUM FLD) (R.O.A)

RNP APCH - GPS.	MALSR	MISSED APPROACH: Climbing right turn to 4000 direct DEWET and hold. ** Missed approach requires minimum climb of 276 feet per NM to 2700.
<div><div><div>⚠</div><div>⚠</div><div>⚠</div></div><div>Circling NA northwest of Rwy 6-24. For inop ALS, increase LNAV Cat C and D visibility to 2½ SM.</div></div>	<div><div>AS</div><div><div></div><div></div><div></div></div></div>	

ATIS 132.375	ROANOKE APP CON 126.9 339.8	ROANOKE TOWER 118.3 257.8	GND CON 121.9 257.8	CLNC DEL 119.7
-----------------	--------------------------------	------------------------------	------------------------	-------------------



CATEGORY	A	B	C	D
LNAV MDA**	1720-½	545 (600-½)	1720-1⅛	545 (600-1⅛)
LNAV MDA	1980-½ 805 (900-½)	1980-¾ 805 (900-¾)	1980-1⅞	805 (900-1⅞)
CIRCLING	1980-1 805 (900-1)	1980-1¼ 805 (900-1¼)	2460-3 1285 (1300-3)	2800-3 1625 (1700-3)

