

ROANOKE, VIRGINIA

AL-349 (FAA)

25163

WAAS CH <b>99522</b> <b>W24A</b>	APP CRS <b>238°</b>	Rwy Ldg <b>6010</b> TDZE <b>1170</b> Apt Elev <b>1175</b>
--	------------------------	---

## RNAV (GPS) Y RWY 24

ROANOKE/BLACKSBURG RGNL (WOODRUM FLD) (ROA)

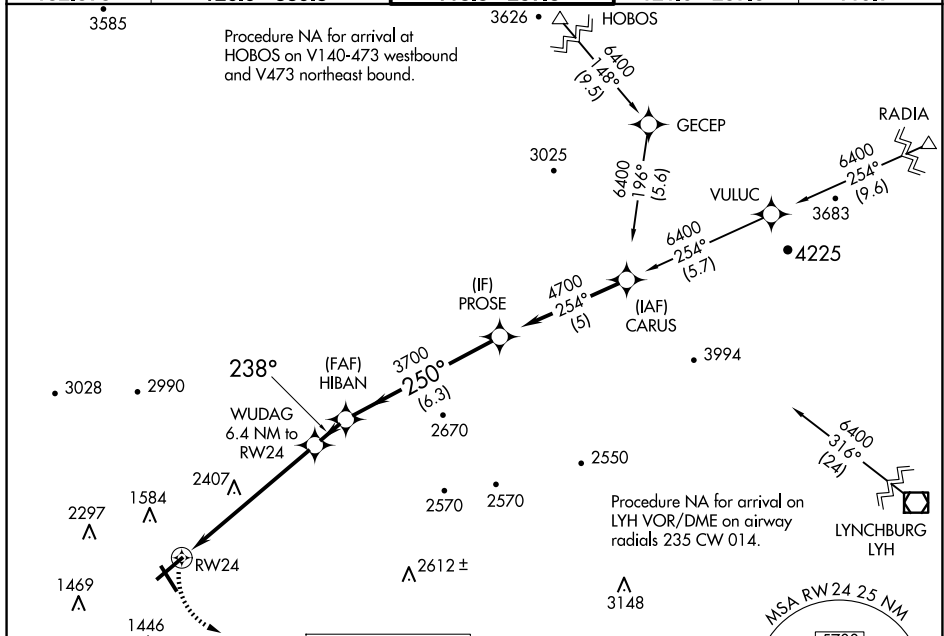
RNP APCH.



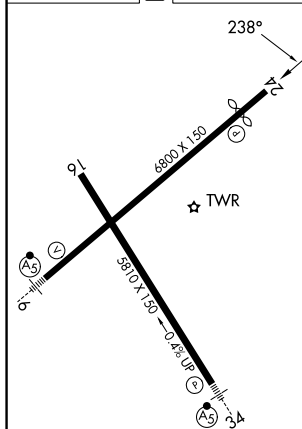
Circling NA northwest of Rwy 6-24.  
Rwy 24 helicopter visibility reduction below  $\frac{3}{4}$  SM NA.

**MISSED APPROACH:** Climbing left turn to 4000 direct MONAT and hold.

ATIS 132.375	ROANOKE APP CON 126.9 339.8	ROANOKE TOWER 118.3 257.8	GND CON 121.9 257.8	CLNC DEL 119.7
-----------------	--------------------------------	------------------------------	------------------------	-------------------



A		
ELEV 1175	D	TDZE 1170



REIL Rwy 6 and 24  
HIRL Rwy 6-24 and 16-34

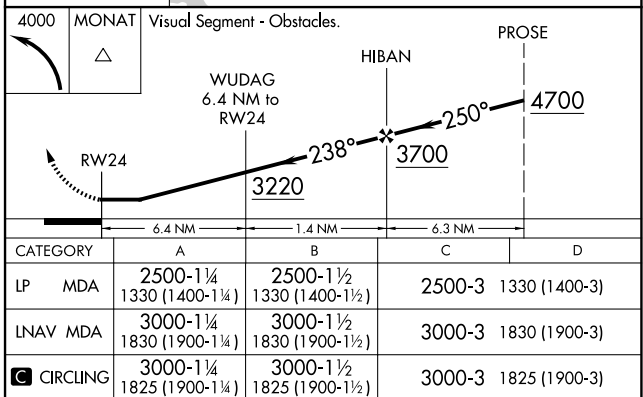
MISSED APCH FIX

MONAT

078°

258°

4 NM



ROANOKE, VIRGINIA

Amdt 2 15AUG19

ROANOKE/BLACKSBURG RGNL (WOODRUM FLD) (ROA)

37°20'N-79°59'W

## RNAV (GPS) Y RWY 24

NE-3, 10 JUL 2025 to 07 AUG 2025