

APP CRS
058°

Rwy Ldg
TDZE
Apt Elev
1175
1175

RNAV (RNP) Z RWY 6

ROANOKE/BLACKSBURG RGNL (WOODRUM FLD) (R.O.A)

RNP AR APCH - GPS.

▼

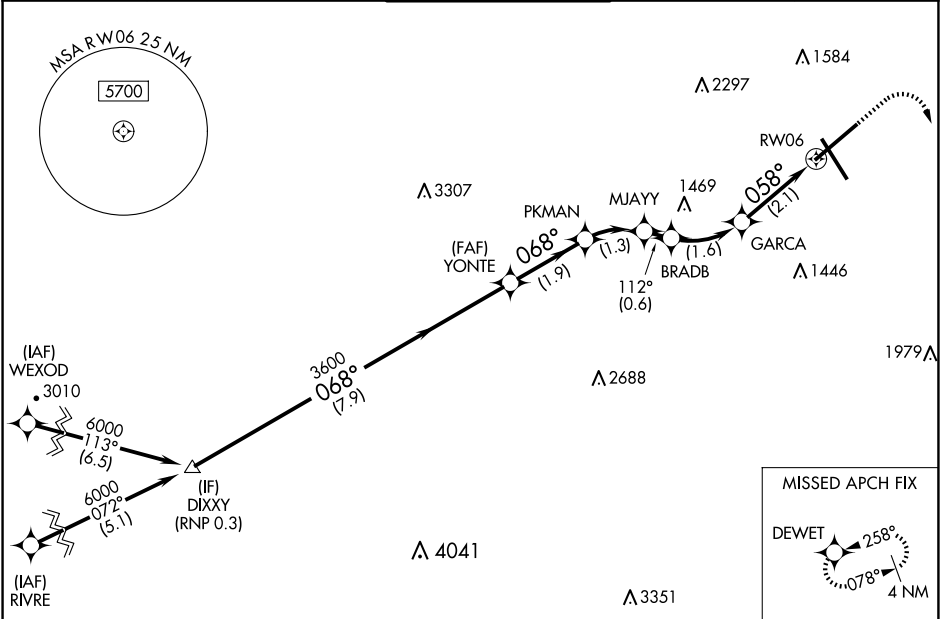
✳️ -13°C

For uncompensated Baro-VNAV systems, procedure NA below -14°C or above 54°C. For inop ALS, increase RNP 0.20 all Cats visibility to ¾ SM.

MALSR

MISSED APPROACH: (Do not exceed 240K until DEWET) Climb to 1600 then climbing right turn to 5000 direct DEWET and hold, continue climb-in-hold to 5000. *Missed approach requires minimum climb of 370 feet per NM to 2900.

ATIS 132,375	ROANOKE APP CON 126.9 339.8	ROANOKE TOWER 118.3 257.8	GND CON 121.9 257.8	CLNC DEL 119.7
------------------------	---------------------------------------	-------------------------------------	-------------------------------	--------------------------



ELEV 1175

D

TDZE 1175

GP 3.00° TCH 58

DIXXY

YONTE

PKMAN

MJAYY

BRADB

GARCA

RWY 6

1600

5000

DEWET

3600

068°

112°

058°

7.9 NM

1.9 NM

1.3 NM

0.6 NM

1.6 NM

2.1 NM

91

6800 X 150

3810 X 150

0.4% UP

TWR

AS

AS

AS

CATEGORY	A	B	C	D
RNP 0.20 DA*		1444-½	269 (300-½)	
RNP 0.30 DA		1605-¾	430 (500-¾)	

AUTHORIZATION REQUIRED

REIL Rwy 6 and 24
HIRL Rwy 6-24 and 16-34