

APP CRS
238°

Rwy Idg
TDZE
1170

Apt Elev
1175

RNAV (RNP) Z RWY 24

ROANOKE/BLACKSBURG RGNL (WOODRUM FLD) (R.O.A)

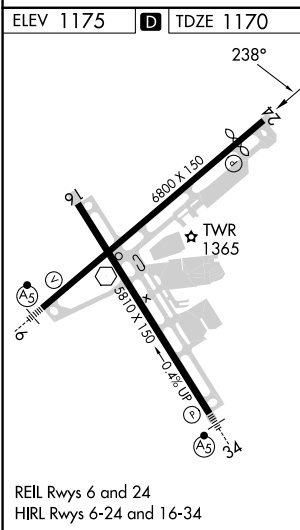
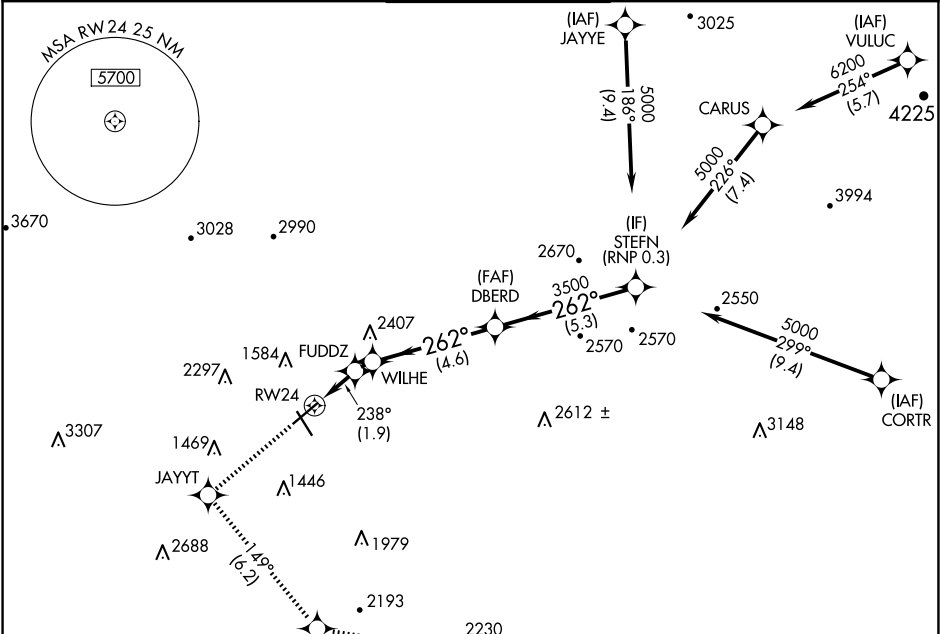
RNP AR APCH - GPS.

-13°C

For uncompensated Baro-VNAV systems,
procedure NA below -14°C or above 54°C.

MISSED APPROACH: Climb to 4000 direct JAYYT and on track 149° to TPUCK and on track 107° to MONAT and hold. # Missed approach requires minimum climb of 230 feet per NM to 3200.

ATIS	ROANOKE APP CON	ROANOKE TOWER	GND CON	CLNC DEL
132.375	126.9 339.8	118.3 257.8	121.9 257.8	119.7



4000	JAYYT	tr 149°	TPUCK	tr 107°	MONAT
	FUDDZ	WILHE	DBERD	STEFN	
	1815	2045	3500	5000	
	238°	262°	3500		
	1.9 NM	0.7 NM	4.6 NM	5.3 NM	
CATEGORY	A	B	C	D	
# RNP 0.15 DA		1491-1	321 (400-1)		
RNP 0.30 DA		1633-1½	463 (500-1½)		
AUTHORIZATION REQUIRED					
GP 3.00 TCH 55					