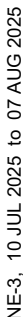


LDA Y RWY 6
ROANOKE/BLACKSBURG RGNL (WOODRUM FLD) (ROA)

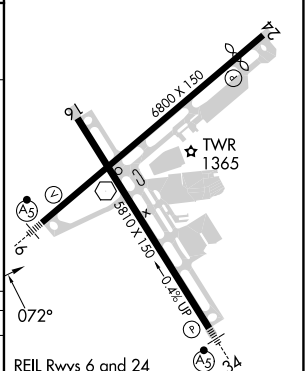
MISSED APPROACH: Climb to 2200 then climbing right turn to 5000 direct VIT NDB and hold, continue climb-in-hold to 5000.



	GND CON	CLNC DEL
	121.9 257.8	119.7



ELEV 1175	D	TDZE 1175
-----------	----------	-----------



FAF to MAP 8.5 NM					
Knots	60	90	120	150	180
Min:Sec	8:30	5:40	4:15	3:24	2:50

NE-3, 10 JUL 2025 to 07 AUG 2025