

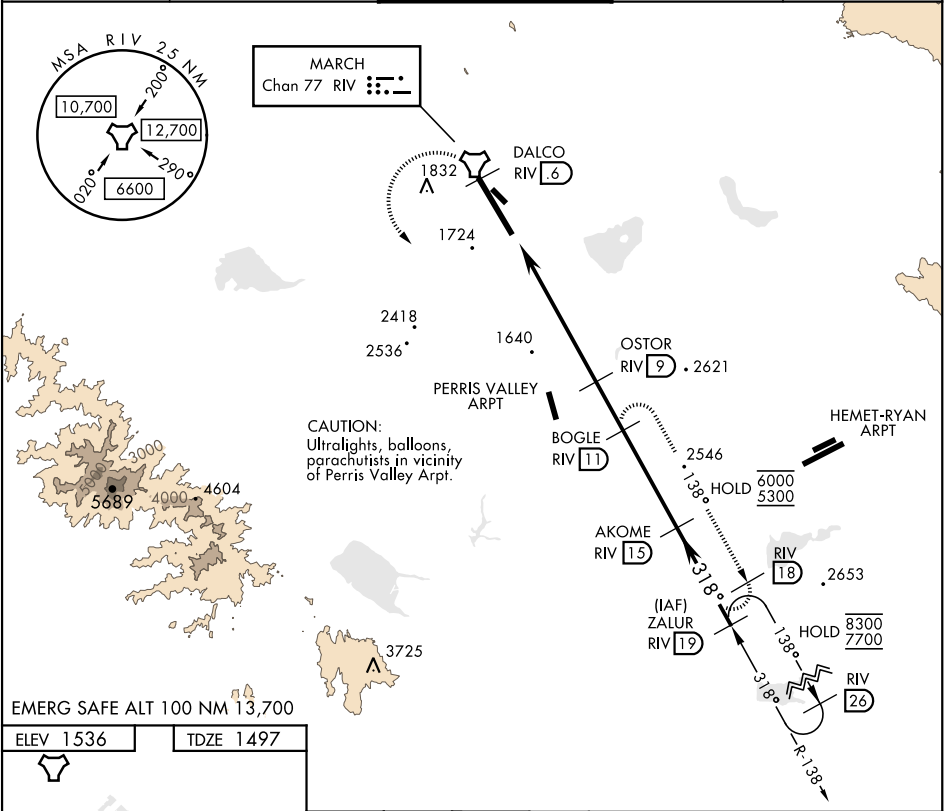
TACAN Y RWY 32

TACAN RIV Chan 77	APCH CRS 318° TDZE 1497 Arpt Elev 1536	Rwy ldg 13,302	AL-348 [USAF]	MARCH ARB (KRIV)
-------------------	--	----------------	---------------	------------------

⚠ *When ALS inop, increase CAT AB RVR to 55 and vis to 1 mile, CAT CDE vis to 1½ miles.
**Circling not authorized NE of Rwy 14-32. Rapid rising terrain.

ALSF-1 MISSED APPROACH: Climb to 5300 on RIV TACAN R-138 to DALCO, then turn left to intercept RIV R-138 direct BOGLE, continue climb in hold to 5300.

ATIS 134.75 239.05	APP/DEP CON ★ 133.5 306.975	TOWER 127.65 253.5	GND CON 121.75 335.8	CLNC DEL 127.775 268.7
--------------------	-----------------------------	--------------------	----------------------	------------------------



EMERG SAFE ALT 100 NM 13,700		ELEV 1536		TDZE 1497	
		TWR 1645		1662	
HIRL Rwy 14-32		318°		(A1)	
3300		DALCO RIV 6.6		BOGLE RIV 11	
TACAN		CULAX 3.3		OSTOR 9	
4.4		AKOME 15		ZALUR 19	
0.5		5.7 NM		7300	
CATEGORY		A		B	
S-32*		2040/24 543 (600-½)		2040/60 543 (600-1½)	
CIRCLING**		2180-1 644 (700-1)		2260-1 724 (800-1)	
		2300-2¼ 764 (800-2¼)		2440-3 904 (1000-3)	
		2840-3 1304 (1400-3)			

TACAN Y RWY 32

SW-3, 10 JUL 2025 to 07 AUG 2025

SW-3, 10 JUL 2025 to 07 AUG 2025