

RIVERSIDE, CALIFORNIA

RNAV (GPS) RWY 14

WAAS CH 91363 W14A	APCH CRS 135°	Rwy ldg TDZE Arpt Elev	13,302 1536 1536
--------------------------	------------------	------------------------------	------------------------

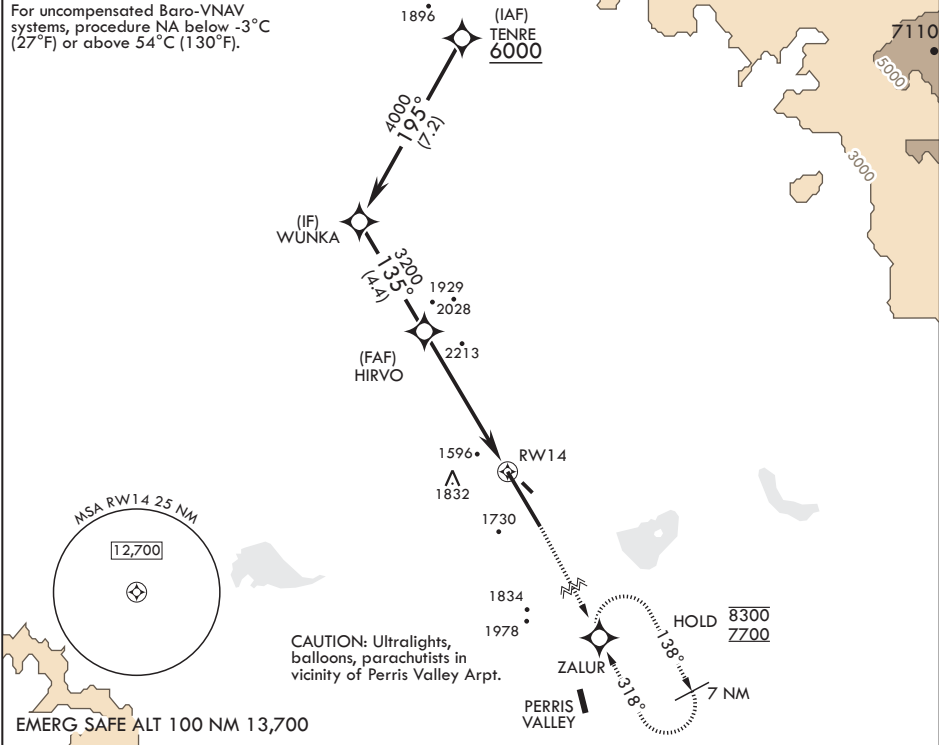
AL-348 (USAF)

MARCH ARB (KRIV)

RNP APCH	MISSED APPROACH: Climb to 2300 then climbing right turn direct ZALUR and hold, continue climb in hold to 7700.
* Circling NA NE of Rwy 14-32. Rapid rising terrain.	

ATIS 134.75 239.05	APP CON/DEP CON* 133.5 306.975	TOWER 127.65 253.5	GND CON 121.75 335.8	CLNC DEL 127.775 268.7
-----------------------	-----------------------------------	-----------------------	-------------------------	---------------------------

For uncompensated Baro-VNAV systems, procedure NA below -3°C (27°F) or above 54°C (130°F).



TENRE 6000

GP 2.70° TCH 56

WUNKA 4000

HIRVO 3200

2.8 NM to RWY 14

5.6 NM

RWY 14

CATEGORY	A	B	C	D
LPV DA	1756/40	220	(300-¾)	
LNAV/VNAV DA	2080-1⅝	544	(600-1⅝)	
LNAV MDA	2380/55 844 (900-1)	2380-1¼ 844 (900-1¼)	2380-2½ 844 (900-2½)	2440-3 904 (1000-3)
CIRCLING*	2380-1¼ 844 (900-1¼)	2380-2½ 844 (900-2½)	2440-3 904 (1000-3)	

ZALUR ELEV 1536

TDZE 1536

135°

1565

3061 x 100

13.302 x 200

0.4% DOWN

BCN

TWR

H

32

A1

RIVERSIDE, CALIFORNIA

33°53'N - 117°16'W

MARCH ARB (KRIV)

Amdt 7 24MAR22
TERPS

RNAV (GPS) RWY 14

SW-3, 10 JUL 2025 to 07 AUG 2025

SW-3, 10 JUL 2025 to 07 AUG 2025