

TACAN RIV Chan <b>77</b>	APCH CRS <b>318°</b>	Rwy Idg <b>13,302</b> TDZE <b>1497</b> Arpt Elev <b>1536</b>
-----------------------------	-------------------------	--

MARCH ARB (KRIV)

**T** \* When ALS inop, increase vis to 15% miles.  
\*\* Circling not authorized NE of Rwy 14-32.  
Rapid rising terrain.

ALSF-1

**MISSED APPROACH:** Climb to 5300 on RIV TACAN R-138 to DALCO, then turn left to intercept RIV R-138 direct BOGLE, continue climb in hold to 5300.

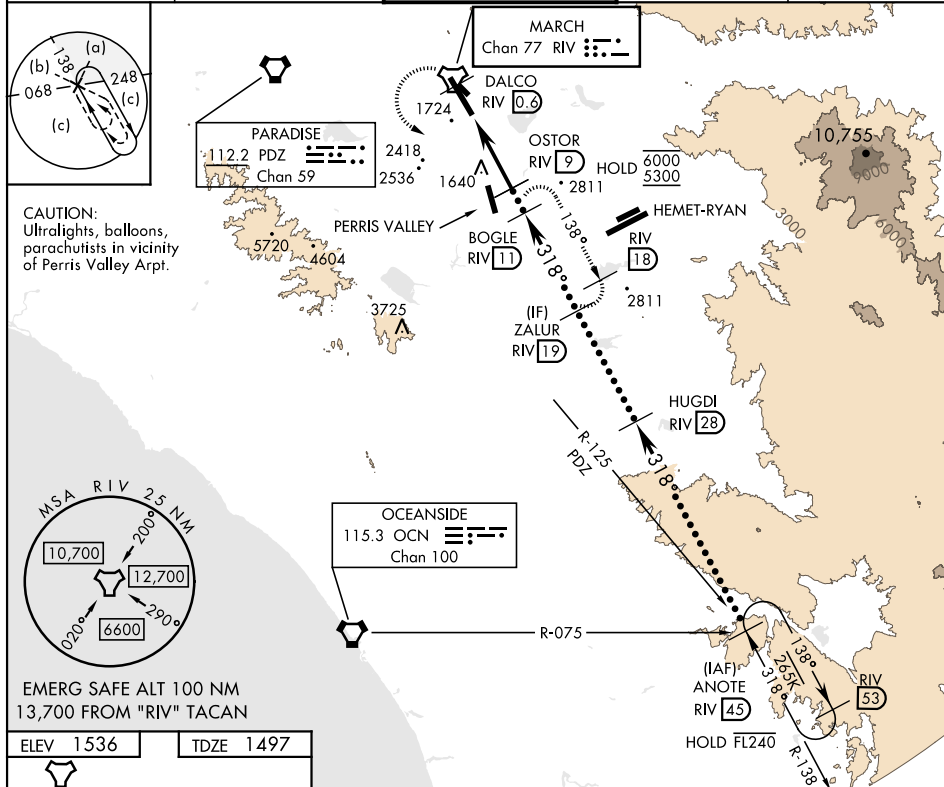
ATIS  
134.75 239.05

APP/DEP CON★  
133.5 306.975

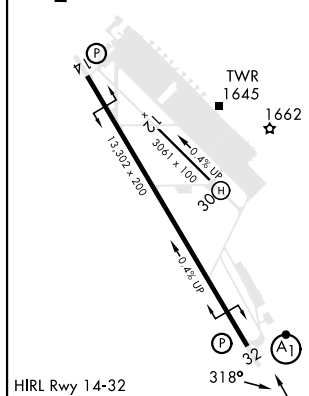
TOWER  
127.65 253.5

GND CON  
**121.75 335.8**

CLNC DEL  
**127.775 268.7**



ELEV 1536		TDZE 1497
-----------	--	-----------



5300 RIV R-138	DALCO RIV <u>0.6</u>	BOGLE RIV <u>1.1</u>		
CATEGORY	C	D	E	
S-32 *	2040/60 543 (600-1½)			
CIRCLING*	2300-2¼ 764 (800-2¼)	2440-3 904 (1000-3)	2840-3 1304 (1400-3)	

RIVERSIDE, CALIFORNIA

33°53'N-117°16'W

MARCH ARB (KRIV)

Amdt 14 31DEC20

HI-TACAN Z RWY 32

SW-3, 10 JUL 2025 to 07 AUG 2025