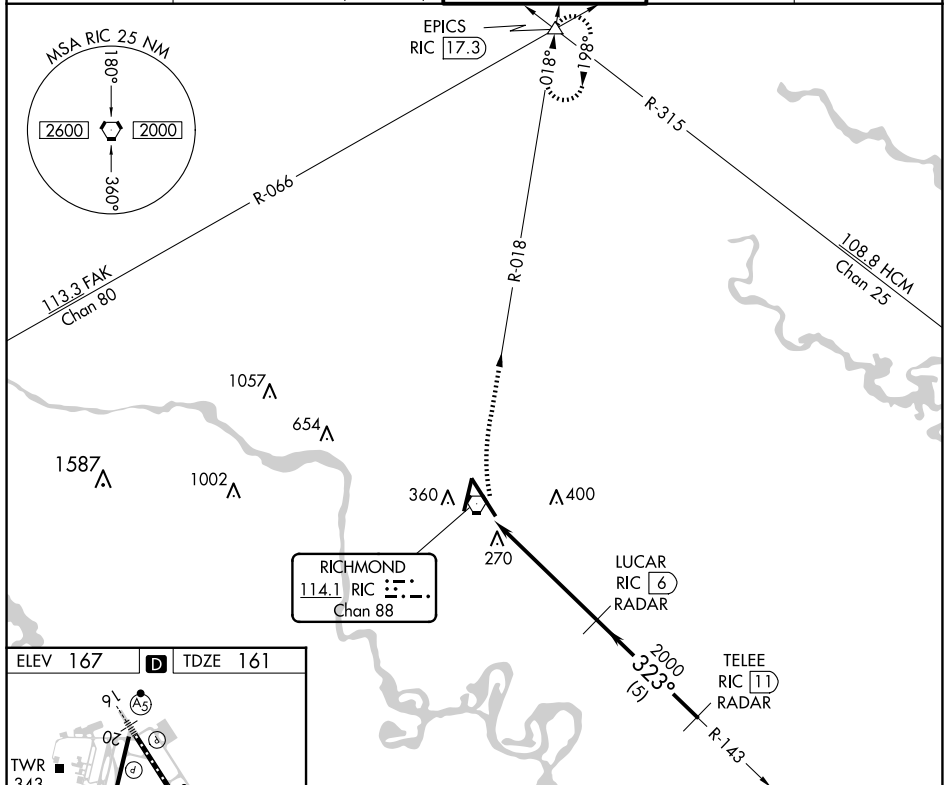


VOR RWY 34
RICHMOND INTL (RIC)

MISSED APPROACH: Climbing right turn to 2000 via RIC R-018 to EPICS INT and hold.



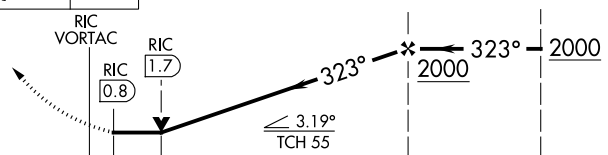
ATIS	POTOMAC APP CON		RICHMOND TOWER		GND CON		CLNC DEL	
119.15 263.025	126.4	282.375 (001°-185°)	121.1	257.8	121.9	348.6	127.55	348.6
	126.75	307.2 (186°-360°)						



ELEV 167 D TDZE 161

TDZ/CL Rwy 34
HIRL Rws 2-20 and 16-34
REIL Rwy 20

FAF to MAP 5.3 NM					
Knots	60	90	120	150	180
Min:Sec	5:18	3:32	2:39	2:07	1:46

2000  RIC R-018		EPICS 		VGSi and descent angles not coincident (VGSi Angle 3/00/TCH 79).		LUCAR RIC <u>6</u> RADAR		TELEEE RIC <u>11</u> RADAR	
									
CATEGORY	A		B		C		D		
S-34	540/24 379 (400-½)				540/40 379 (400-¾)		540/50 379 (400-1)		
C CIRCLING	660-1 493 (500-1)				700-1½ 533 (600-1½)		720-2 553 (600-2)		

NE-3, 10 JUL 2025 to 07 AUG 2025