

VORTAC RIC	APP CRS	Rwy Idg	6607
114.1	188°	TDZE	168
Chan 88		Apt Elev	168

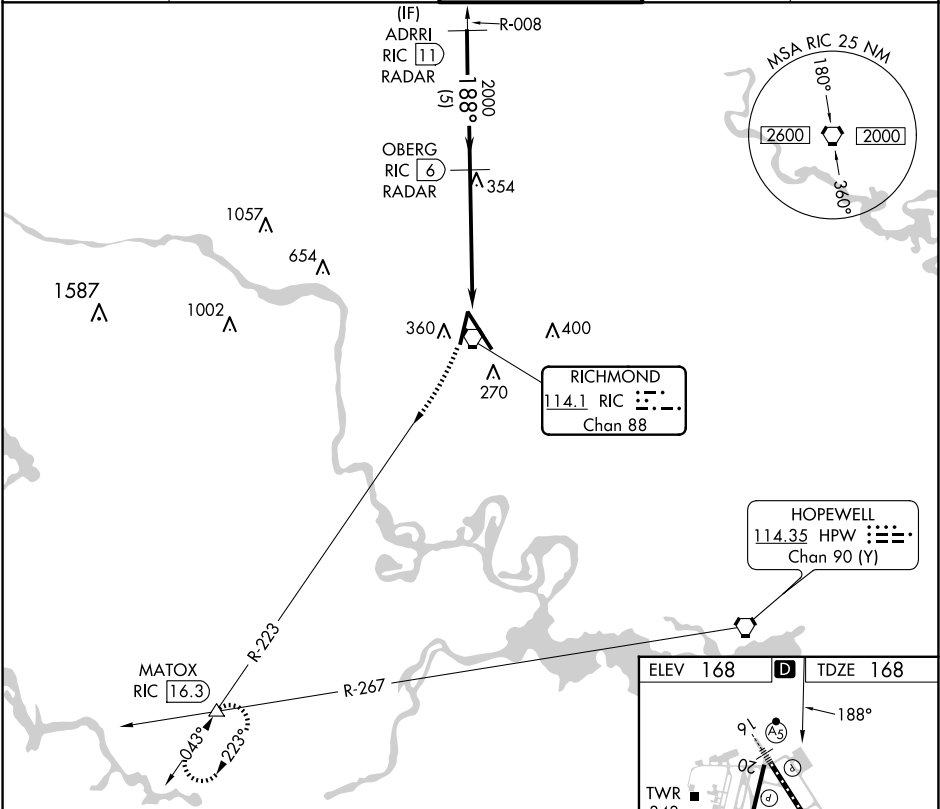
VOR RWY 20
RICHMOND INTL (RIC)

RADAR required for procedure entry. DME or RADAR required.

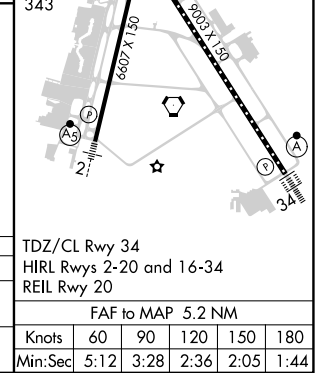
MISSED APPROACH: Climbing right turn to 2000 on RIC R-223 to MATOX INT/RIC 16.3 DME and hold.

Rwy 20 helicopter visibility reduction below ¾ SM NA.

ATIS	POTOMAC APP CON	RICHMOND TOWER	GND CON	CLNC DEL
119.15 263.025	126.4 282.375 (001°-185°) 126.75 307.2 (186°-360°)	121.1 257.8	121.9 348.6	127.55 348.6



2000	MATOX	VGSI and descent angles not coincident (VGSI Angle 3.00/TCH 49).	
RIC R-223	△	OBERG RIC 6 RADAR	ADP RI RIC 11 RADAR
RIC 0.9	RIC 2.2	188°	2000
RIC VORTAC		3.26° TCH 50	
1.4	3.8 NM	5 NM	
CATEGORY	A	B	C
S-20	660-1 492 (500-1)	660-1 492 (500-1 3/8)	
CIRCLING	660-1 492 (500-1)	700-1 532 (600-1 1/2)	720-2 552 (600-2)



NE-3, 10 JUL 2025 to 07 AUG 2025

NE-3, 10 JUL 2025 to 07 AUG 2025