


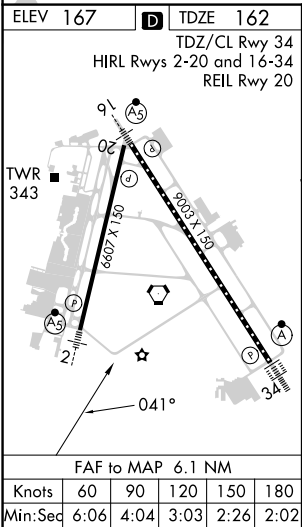
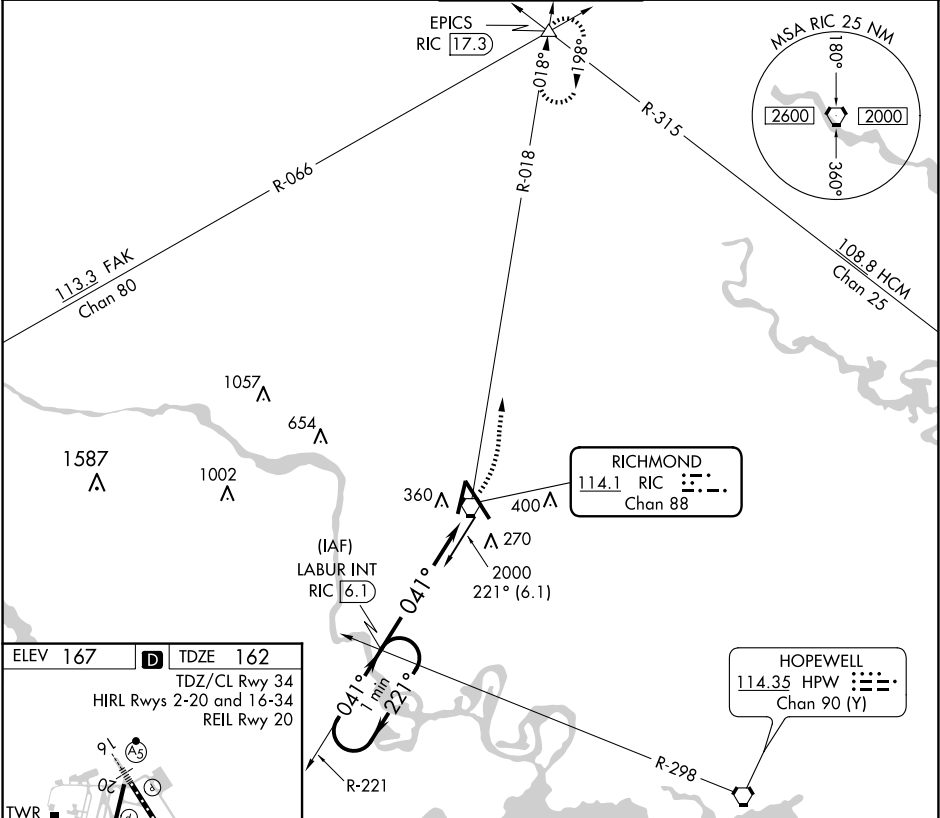
VORTAC RIC	Rwy Idg	6607
114.1	TDZE	162
Chan 88	Apt Elev	167


APP CRS  
041°

VOR RWY 2  
RICHMOND INTL (RIC)

<p><b>▼</b> Rwy 2 helicopter visibility reduction below <math>\frac{3}{4}</math> SM NA. For inop ALS, increase S-2 Cat A/B visibility to 1 SM, and Cat C/D to 1<math>\frac{1}{2}</math> SM.</p>	<p>MALSRL</p> <p></p>	<p>MISSED APPROACH: Climbing left turn to 2000 on RIC VORTAC R-018 to EPICS INT/RIC 17.3 DME and hold.</p>
---	--	--

ATIS 119.15 263.025	POTOMAC APP CON 126.4 282.375 (001°-185°) 126.75 307.2 (186°-360°)	RICHMOND TOWER 121.1 257.8	GND CON 121.9 348.6	CLNC DEL 127.55 348.6
------------------------	--	-------------------------------	------------------------	--------------------------



One Minute Holding Pattern		LABUR INT RIC 6.1	2000 RIC R-018	EPICS
2000		221°	041°	
		041°		
		2.98°	TCH 49	
		4.3 NM	1.4	
CATEGORY	A	B	C	D
S-2	640- $\frac{3}{4}$	478 (500- $\frac{3}{4}$ )	640-1	478 (500-1)
 CIRCLING	660-1	493 (500-1)	700-1 $\frac{1}{2}$ 533 (600-1 $\frac{1}{2}$ )	720-2 553 (600-2)