

VORTAC RIC 114.1 Chan 88	APP CRS 171°	Rwy Idg TDZE 167 Apt Elev 167	9003	VOR RWY 16 RICHMOND INTL (RIC)
--	------------------------	---	-------------	-----------------------------------

DME or RADAR required. RADAR required for procedure entry.

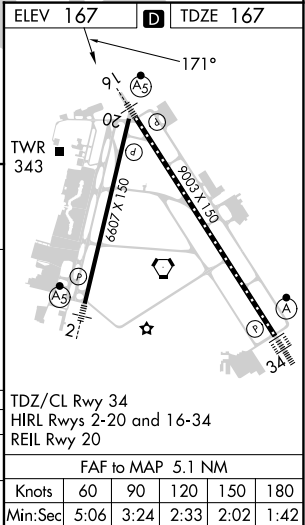
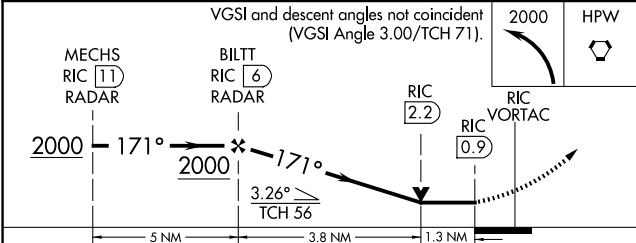
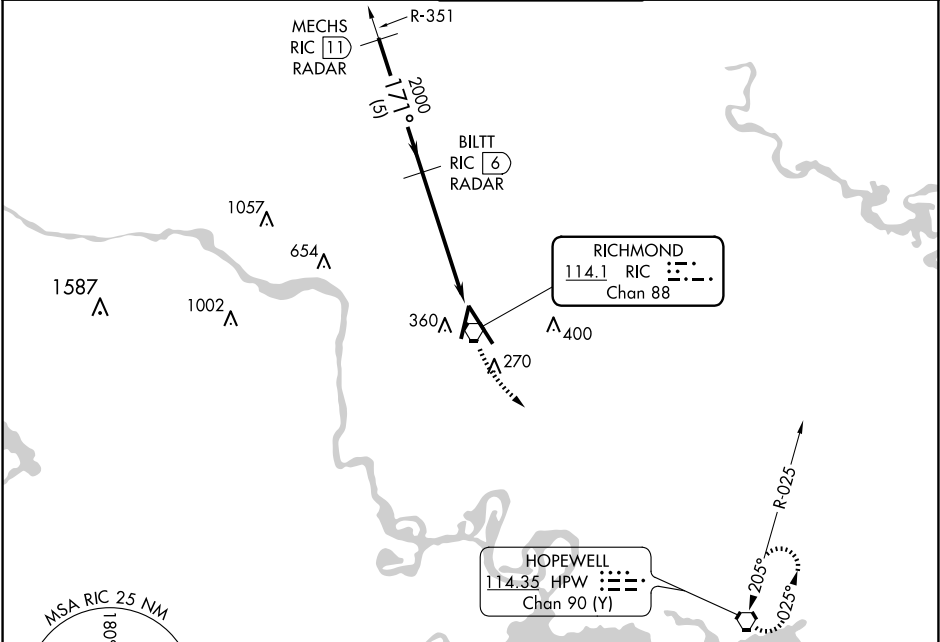
▼

Rwy 16 helicopter visibility reduction below RVR 4000 NA. For inop ALS, increase S-16 Cat A/B visibility to RVR 5500, and Cat C/D to 1 3⁄8 SM.

MALSR

MISSED APPROACH: Climbing left turn to 2000 direct HPW VORTAC and hold.

ATIS 119.15 263.025	POTOMAC APP CON 126.4 282.375 (001°-185°) 126.75 307.2 (186°-360°)	RICHMOND TOWER 121.1 257.8	GND CON 121.9 348.6	CLNC DEL 127.55 348.6
-------------------------------	--	--------------------------------------	-------------------------------	---------------------------------



CATEGORY	A	B	C	D
S-16	640/40 473 (500-3⁄4)			640/50 473 (500-1)
CIRCLING	660-1 493 (500-1)		700-1 1⁄2 533 (600-1 1⁄2)	720-2 553 (600-2)

TDZ/CL Rwy 34 HIRL Rwy 2-20 and 16-34 REIL Rwy 20				
FAF to MAP 5.1 NM				
Knots	60	90	120	150 180
Min:Sec	5:06	3:24	2:33	2:02 1:42