

WAAS CH <b>72716</b> <b>W02A</b>	APP CRS <b>023°</b>	Rwy Idg <b>6607</b> TDZE <b>161</b> Apt Elev <b>168</b>
--	------------------------	---

RNAV (GPS) Z RWY 2  
RICHMOND INTL (RIC)

RNP APCH.

**T**

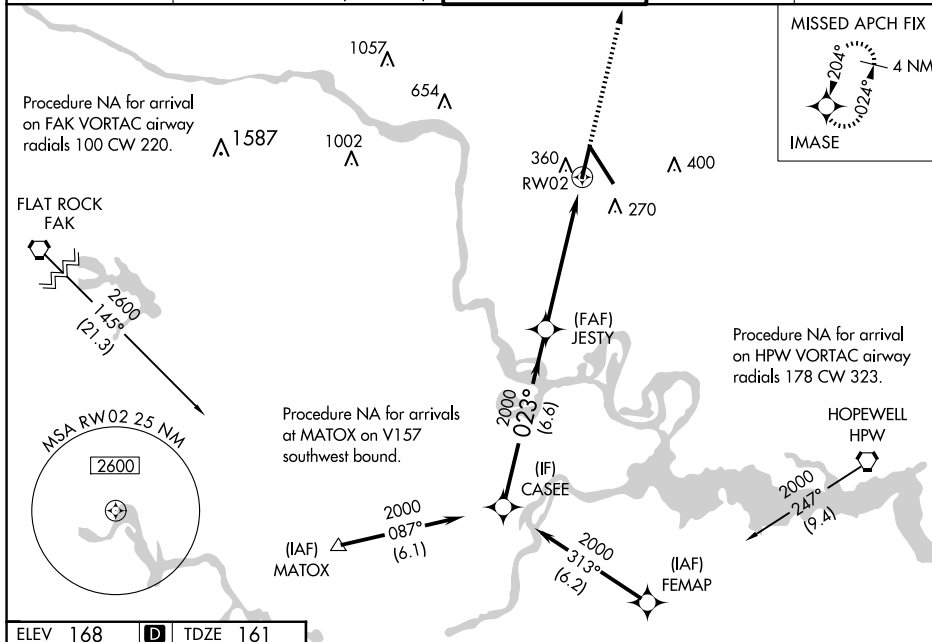
For uncompensated Baro-VNAV systems, LNAV/VNAV NA  
below -11°C (13°F) or above 54°C (130°F).  
Rwy 2 helicopter visibility reduction below  $\frac{3}{4}$  SM NA.

MALSR

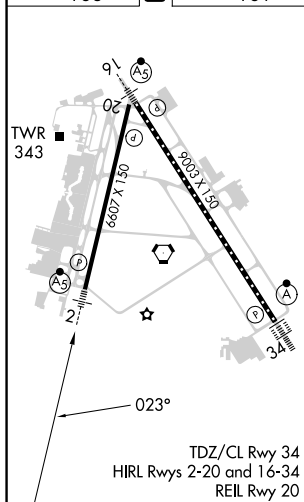


**MISSED APPROACH:** Climb to 2000 direct IMASE and hold.

ATIS		POTOMAC APP CON		RICHMOND TOWER		GND CON		CLNC DEL	
119.15	263.025	126.4	282.375 (001°-185°)	121.1	257.8	121.9	348.6	127.55	348.6
		126.75	307.2 (186°-360°)						



ELEV 168	<b>D</b>	TDZE 161
----------	----------	----------



CATEGORY	A	B	C	D
LPV DA	457- <sup>3</sup> / <sub>4</sub>		296 (300- <sup>3</sup> / <sub>4</sub> )	
LNAV/VNAV DA	568- <sup>7</sup> / <sub>8</sub>		407 (400- <sup>7</sup> / <sub>8</sub> )	
LNAV MDA	620- <sup>3</sup> / <sub>4</sub>	459 (500- <sup>3</sup> / <sub>4</sub> )	620-1	459 (500-1)
<b>C</b> CIRCLING	660-1	492 (500-1)	700-1½ 532 (600-1½)	720-2 552 (600-2)