

WAAS  
CH **72720**  
**W16A**

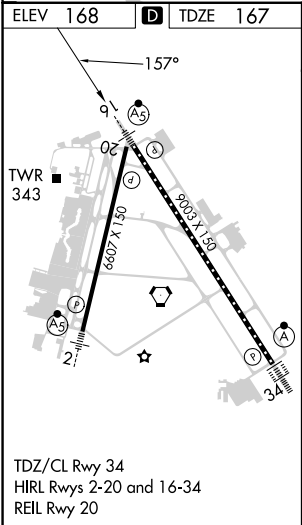
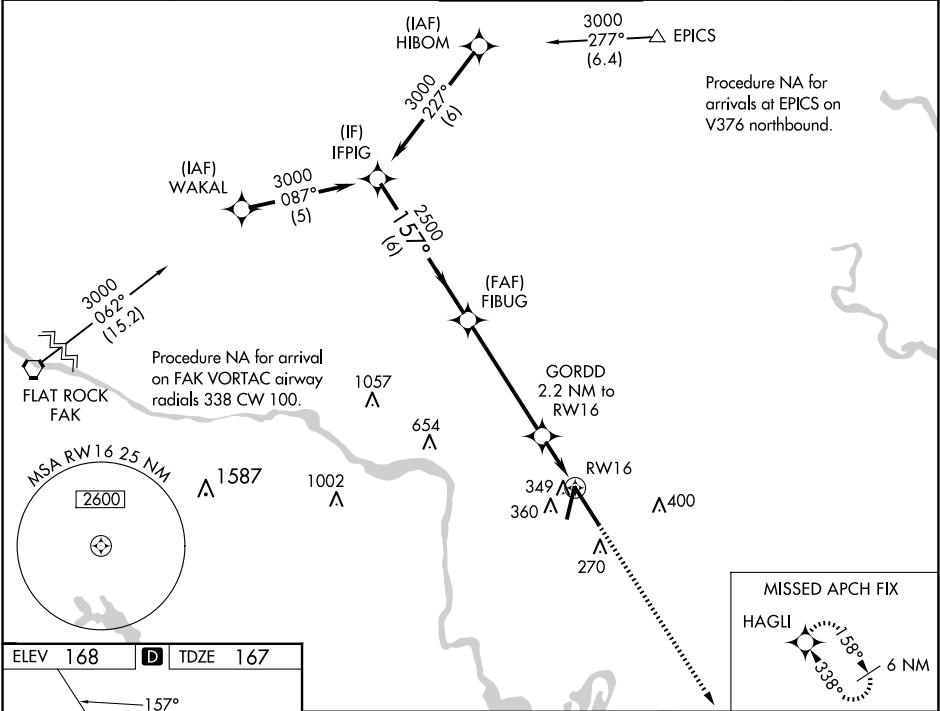
APP CRS  
**157°**

Rwy Idg  
TDZE **167**  
Apt Elev **168**

**RNAV (GPS) Z RWY 16**

RICHMOND INTL (RIC)

RNP APCH		MALSR		MISSED APPROACH: Climb to 2500 direct HAGLI and hold.	
▼ For uncompensated Baro-VNAV systems, LNAV/VNAV NA below -11°C (13°F) or above 54°C (130°F). For inop ALS increase LNAV/VNAV all Cnts visibility to RVR 5400. ** RVR 1800 authorized with use of FD or AP or HUD to DA.					
ATIS <b>119.15 263.025</b>	POTOMAC APP CON <b>126.4 282.375</b> (001°-185°) <b>126.75 307.2</b> (186°-360°)	RICHMOND TOWER <b>121.1 257.8</b>	GND CON <b>121.9 348.6</b>	CLNC DEL <b>127.55 348.6</b>	



ELEV 168 D TDZE 167		VGSi and RNAV glidepath not coincident (VGSi Angle 3.00/TCH 71).		2500	HAGLI
IFPIG 3000 157°		FIBUG 2500	GORDD 2.2 NM to RW16	*1.2 NM to RW16	*LNAV only.
GP 3.00° TCH 54		2500	920*	RW16	
6 NM		5 NM	1 NM	1.2 NM	
CATEGORY	A	B	C	D	
LPV DA **	367/24 200 (200-½)				
LNAV/VNAV DA	504/31 337 (400-¾)				
LNAV MDA	600/24	433 (500-½)	600/40	433 (500-¾)	
CIRCLING	660-1	492 (500-1)	700-1½ 532 (600-1½)	720-2 552 (600-2)	