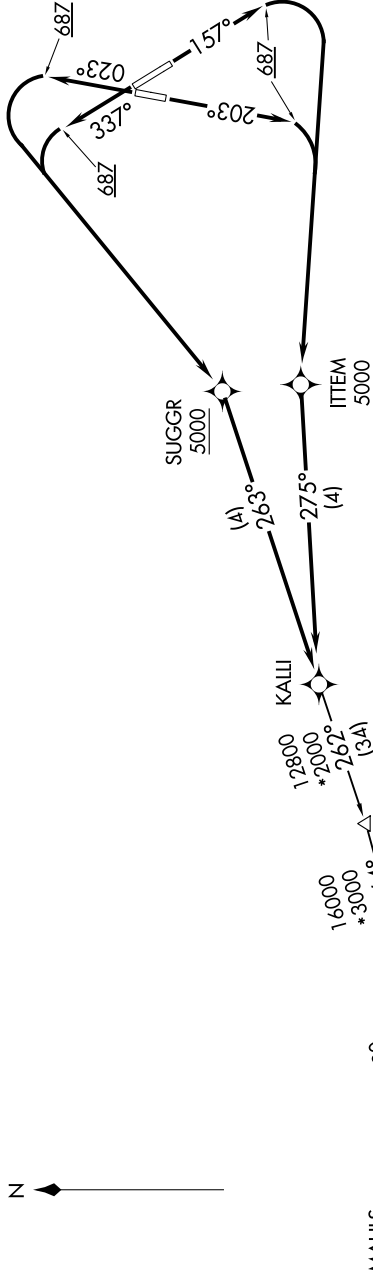


NE-3, 10 JUL 2025 to 07 AUG 2025

ATIS  
119.15 263.025  
CINC DEL  
127.55 348.6  
GND CON  
121.9 348.6  
RICHMOND TOWER  
121.1 257.8  
POTOMAC DEP CON  
126.75 307.2

TAKEOFF MINIMUMS  
Rwys 2, 16, 20, 34: Standard with minimum climb of 500' per NM to 687.

TOP ALTITUDE:  
5000



NOTE: DME/DME/IRU or GPS required.  
NOTE: RNAV 1.  
NOTE: RADAR required for non-GPS equipped aircraft.

NOTE: Chart not to scale.

(NARRATIVE ON FOLLOWING PAGE)

NE-3, 10 JUL 2025 to 07 AUG 2025