

ILS or LOC RWY 34
RICHMOND INTL (RIC)

MISSED APPROACH: Climb to 800 then climbing right turn to 2000 on RIC VORTAC R-018 to EPICS INT/RIC 17.3 DME and hold.

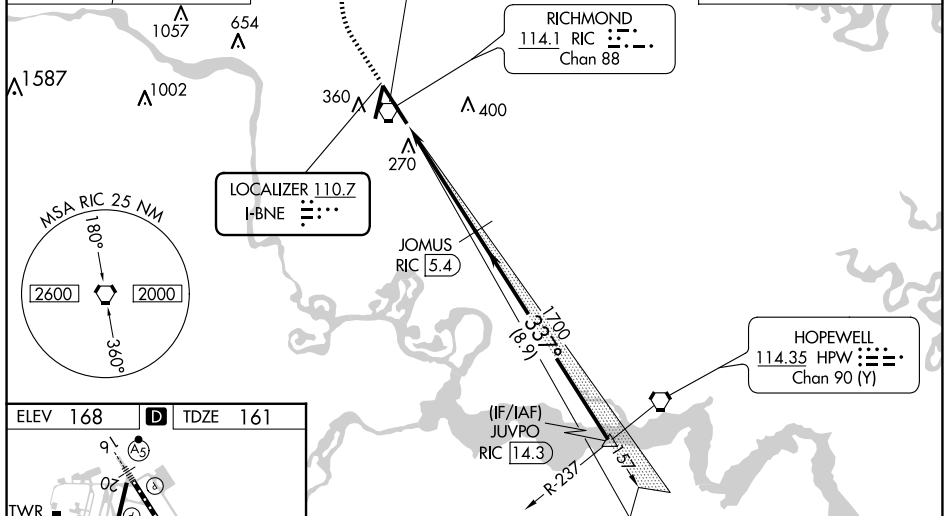
The diagram shows the location of the alternate missed approach fix (MISSED APCH FIX) and the alternate missed approach fix (ALTERNATE MISSED APCH FIX) for the 113.3 FAK Chan 80. The diagram includes a north arrow, a scale bar, and various navigational aids and frequencies.

MISSED APCH FIX

- R-315
- R-018
- R-066
- EPICS RIC 17.3
- 113.3 FAK Chan 80
- 114.1 RIC Chan 88
- 108.8 HCM Chan 25
- 198.0

ALTERNATE MISSED APCH FIX

- R-018
- HOPEWELL HPW 114.35 Chan 90 (Y)
- 205°-R-025
- 102.5



343

6407 X 150

2002 X 150

343°

337°

34°

800

2000

EPICS

RIC R-018

△

JOMUS RIC 5.4

JUVPO RIC 14.3

1700

1700

337°

1700

VGSI and ILS glidepath not coincident (VGSI Angle 3.00/TCH 79)

GS 3.00° TCH 54

1.2 NM

3.5 NM

8.9 NM

CATEGORY	A	B	C	D	E
S-ILS 34	361/18 200 (200-½)				
S-LOC 34	620/24 459 (500-½)	620/45 459 (500-¾)			
CIRCLING	660-1 492 (500-1)	700-1½ 532 (600-1½)	720-2 552 (600-2)	740-2 572 (600-2)	

TDZ/CL Rwy 34

HIRL Rwys 2-20 and 16-34

REIL Rwy 20

FAF to MAP 4.7 NM

Knots	60	90	120	150	180
Min:Sec	4:42	3:08	2:21	1:53	1:34

NE-3, 10 JUL 2025 to 07 AUG 2025

NE-3, 10 JUL 2025 to 07 AUG 2025