

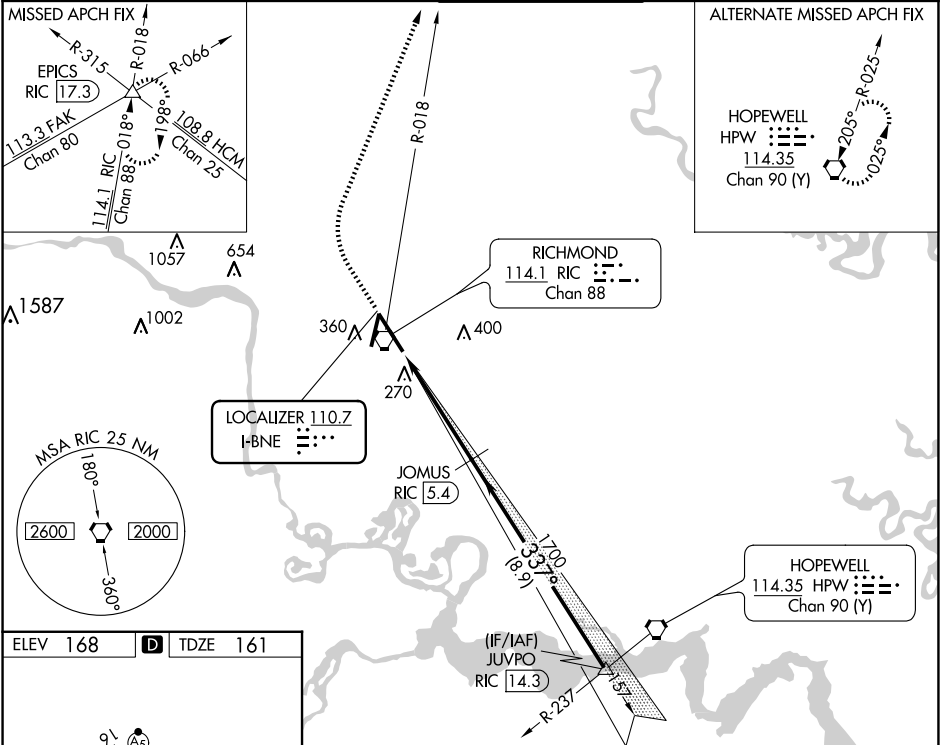
LOC I-BNE 110.7	APP CRS 337°	Rwy Idg 9003 TDZE 161 Apt Elev 168	ILS RWY 34 (SA CAT I) RICHMOND INTL (RIC)
---------------------------	------------------------	---	---

Requires specific OPSPEC, MSPEC, or LOA approval. DME from RIC VORTAC. DME use requires simultaneous reception of I-BNE and RIC DME.

ALSIF-2

MISSED APPROACH: Climb to 800 then climbing right turn to 2000 on RIC VORTAC R-018 to EPICS INT/RIC 17.3 DME and hold.

ATIS 119.15 263.025	POTOMAC APP CON 126.4 282.375 (001°-185°) 126.75 307.2 (186°-360°)	RICHMOND TOWER 121.1 257.8	GND CON 121.9 348.6	CLNC DEL 127.55 348.6
-------------------------------	--	--------------------------------------	-------------------------------	---------------------------------



800	2000	EPICS	JOMUS RIC 5.4	JUVPO RIC 14.3
↑	RIC R-018	△	1700	1700
VGSI and ILS glidepath not coincident (VGSI Angle 3.00/TCH 79).				
GS 3.00° TCH 54				
4.7 NM				
8.9 NM				
CATEGORY	A	B	C	D
S-ILS 34	RA 156/14 150 DA 311			

SA CATEGORY I ILS - SPECIAL AIRCREW & AIRCRAFT CERTIFICATION REQUIRED

RICHMOND, VIRGINIA
Amdt 15A 15JUN23

RICHMOND INTL (RIC)
ILS RWY 34 (SA CAT I)