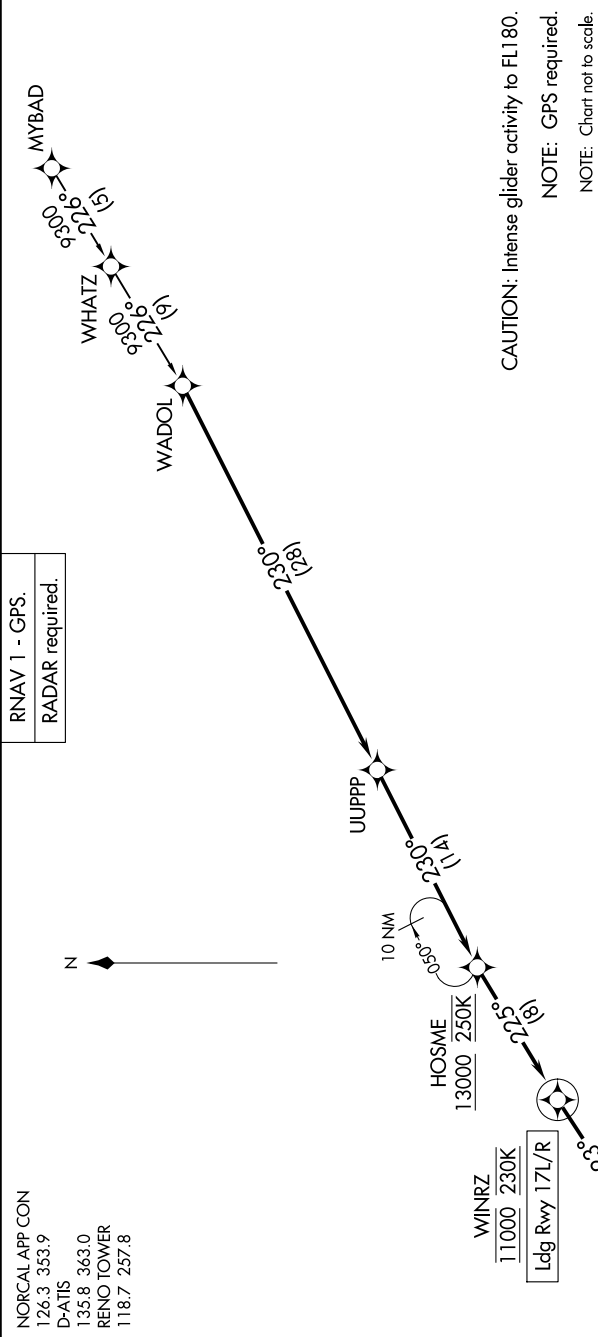


SW-4, 10 JUL 2025 to 07 AUG 2025



ARRIVAL ROUTE DESCRIPTION

MYBAD TRANSITION (MYBAD.WINRZ1)

From WADOL on track 230° to UUPPP, then on track 230° to cross HOSME at or above 13000 and at 250K, then on track 225° to cross WINRZ at 11000 and at 230K, then on heading 223°. Expect assigned instrument approach for Rwy 17L/R or RADAR vectors to final approach course.

LOST COMMUNICATIONS

At WINRZ, proceed inbound via Rwy 17R ILS approach. If unable, direct to FMG VORTAC and hold.



SW-4, 10 JUL 2025 to 07 AUG 2025