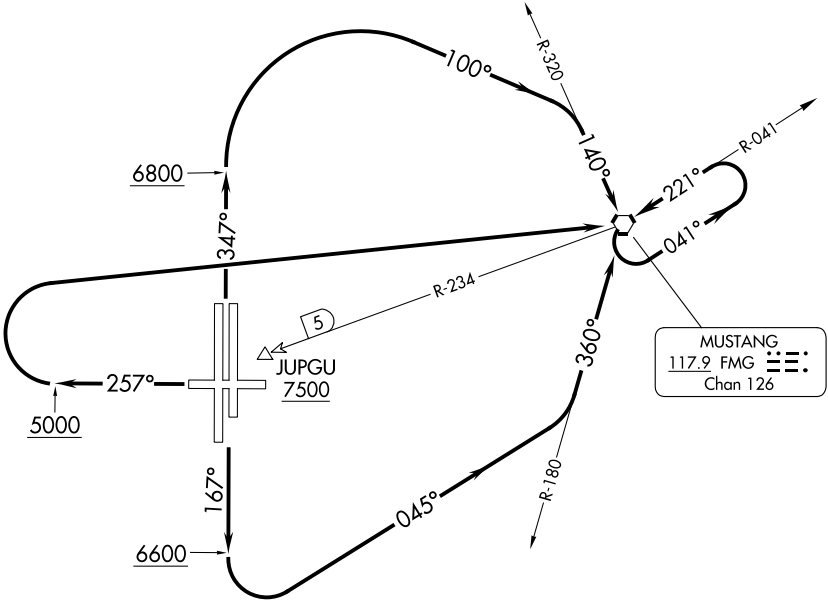


TAKEOFF MINIMUMS

- Rwy 8: NA - Terrain.
- Rwy 17L: 600-1 $\frac{3}{8}$  with minimum climb of 415' per NM to 8700 or standard with minimum climb of 745' per NM to 7200, or 3200-3 for VCOA.
- Rwy 17R: Standard with minimum climb of 420' per NM to 8700, or 3200-3 for VCOA.
- Rwy 26: Standard with minimum climb of 485' per NM to 7900, or 3200-3 for VCOA.
- Rwy 35L: Standard with minimum climb of 375' per NM to 8600, or 3200-3 for VCOA.
- Rwy 35R: 400-1 $\frac{1}{2}$  with a minimum climb of 270' per NM to 8600 or standard with a minimum climb of 420' per NM to 7400, or 3200-3 for VCOA.

NORCAL DEP CON			
119.2	279.55	(17L/R)	
126.3	353.9	(Rwys 26, 35L/R)	



DEPARTURE ROUTE DESCRIPTION

- TAKEOFF RUNWAYS 17L/R: Climb on heading 167° to 6600, then climbing left turn heading 045° to intercept FMG VORTAC R-180 to FMG VORTAC, continue climb in FMG VORTAC holding pattern to cross FMG VORTAC at or above MEA/MCA for route of flight.
- TAKEOFF RUNWAY 26: Climb on heading 257° to 5000, then climbing right turn direct FMG VORTAC, continue climb in FMG VORTAC holding pattern to cross FMG VORTAC at or above MEA/MCA for route of flight.
- TAKEOFF RUNWAYS 35L/R: Climb on heading 347° to 6800, then climbing right turn heading 100° to intercept FMG VORTAC R-320 to FMG VORTAC, continue climb in FMG VORTAC holding pattern to cross FMG VORTAC at or above MEA/MCA for route of flight.
- VCOA ALL RUNWAYS: Obtain ATC approval for VCOA when requesting IFR clearance. Climb in visual conditions to cross JUPGU (FMG R-234/5 DME) at or above 7500 on FMG R-234 to FMG VORTAC, then continue climb in FMG VORTAC holding pattern to cross FMG VORTAC at or above MEA/MCA for route of flight.