


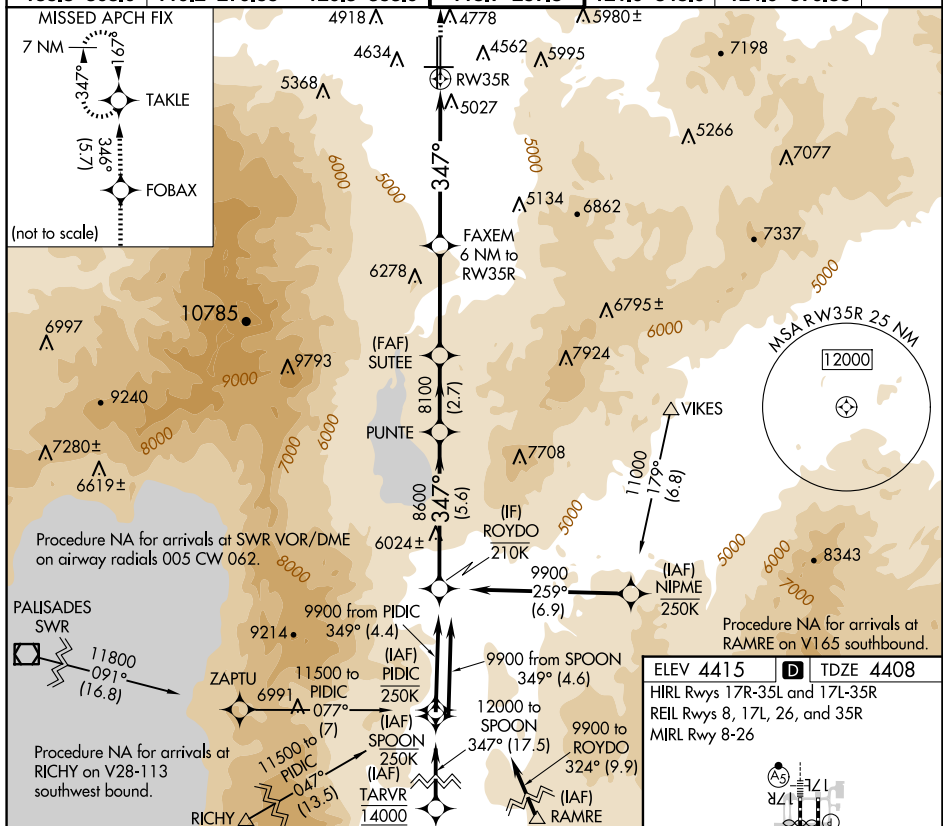


APP CRS 347°	Rwy Idg TDZE Apt Elev	9000 4408 4415
------------------------	-----------------------------	---

RNAV (GPS) X RWY 35R
RENO/TAHOE INTL (RNO)

<p>RNP APCH - GPS.</p> <p> Circling Rwy 8 NA at night. Rwy 35R helicopter visibility reduction below $\frac{3}{4}$ SM NA.</p> <p> Baro-VNAV NA.</p> <p> -13°C</p>	<p>MISSED APPROACH: Climb to 11000 direct FOBAX and on track 346° to TAKLE and hold, continue climb-in-hold to 11000.</p> <p>*Missed approach requires minimum climb of 250 feet per NM to 5600.</p>
---	--

D-ATIS	NORCAL APP CON				RENO TOWER	GND CON	CLNC DEL	CPDLC
135.8 363.0	119.2	279.55	126.3	353.9	118.7 257.8	121.9 348.6	124.9 370.85	



				11000				FOBAK		tr 346°		TAKLE																			
9900				347°				8600				8100				6660				FAXEM 6 NM to RW35R				2.5 NM to RW35R				RW35R			
GP 3.42° TCH 75				5.6 NM				2.7 NM				4 NM				3.5 NM				2.5 NM											
CATEGORY				A				B				C				D															
LNAV/VNAV DA				5471-4				1063 (1100-4)																							
LNAV MDA*				5380-1¼ 972 (1000-1¼)				5380-1½ 972 (1000-1½)				5380-3				972 (1000-3)															
LNAV MDA				5500-1¼ 1092 (1100-1¼)				5500-1½ 1092 (1100-1½)				5500-3				1092 (1100-3)															
CIRCLING				5500-1¼ 1085 (1100-1¼)				5500-1½ 1085 (1100-1½)				6460-3				2045 (2100-3)															

