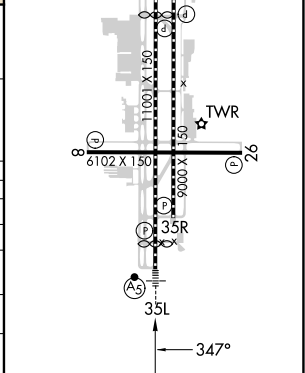
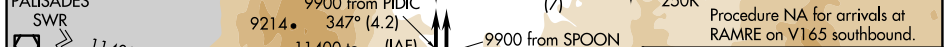


RNAV (GPS) X RWY 35L  
RENO/TAHOE INTL (RNO)

**MISSED APPROACH:** Climb to 11000 direct TAKLE and hold, continue climb-in-hold to 11000.  
\*Missed approach requires minimum climb of 250 feet per NM to 5600.



MISSED APCH FIX	4918 $\Delta$	$\Delta$ 4778	$\Delta$ 5980 $\pm$
-----------------	---------------	---------------	---------------------



CATEGORY	A	B	C	D
LNAV/VNAV DA*	5480-4 1070 (1100-4)			
LNAV/VNAV DA	5521-4 1111 (1200-4)			
LNAV MDA*	5480- $\frac{3}{4}$ 1070 (1100- $\frac{3}{4}$ )	5480-1 1070 (1100-1)	5480-2½ 1070 (1100-2½)	
LNAV MDA	5560- $\frac{3}{4}$ 1150 (1200- $\frac{3}{4}$ )	5560-1 1150 (1200-1)	5560-3 1150 (1200-3)	
CIRCLING	5560-1¼ 1145 (1200-1¼)	5560-1½ 1145 (1200-1½)	6460-3 2045 (2100-3)	

SW-4, 10 JUL 2025 to 07 AUG 2025