

RENO, NEVADA

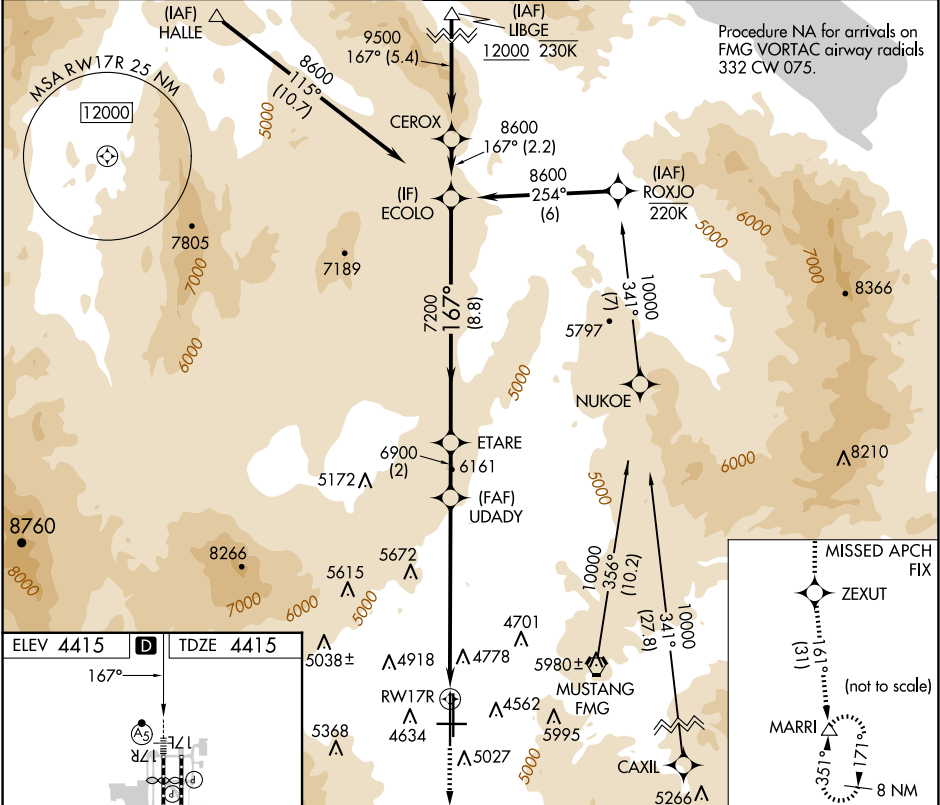
AL-346 (FAA)

25107

WAAS CH 78309 W17B	APP CRS 167°	Rwy ldg TDZE 4415 Apt Elev 4415
--	------------------------	---

RNAV (GPS) X RWY 17R
RENO/TAHOE INTL (RNO)

RNP APCH - GPS.		MALSR	MISSED APPROACH: Climb to 13000 direct ZEXUT and on track 161° to MARRI and hold.	
For inop ALS, increase LPV all Cats visibility to 2 1/2 SM. Inop table does not apply to LNAV all Cats.				
D-ATIS	NORCAL APP CON	RENO TOWER	GND CON	CLNC DEL
135.8 363.0	119.2 279.55 126.3 353.9	118.7 257.8	121.9 348.6	124.9 370.85
			CPDLC	



ELEV 4415	TDZE 4415	167°	
13000	ZEXUT	MARRI	VGSI and RNAV glidepath not coincident (VGSI Angle 3.06/TCH 77).
UDAYI	ETARE	ECOLO	
RW17R		5.2 NM to RW17R	GP 3.16° TCH 59
-5.2 NM		-2.1 NM	-2 NM
-8.8 NM			
CATEGORY	A	B	C
LPV DA	5239-1 7/8 824 (900-1%)		
LNAV MDA	6200/40 1785 (1800-3/4)	6200/55 1785 (1800-1)	6200-3 1785 (1800-3)

RENO, NEVADA
Amdt 2 03NOV22

39°30'N-119°46'W

RENO/TAHOE INTL (RNO)

RNAV (GPS) X RWY 17R

SW-4, 10 JUL 2025 to 07 AUG 2025

SW-4, 10 JUL 2025 to 07 AUG 2025