




RENO, NEVADA

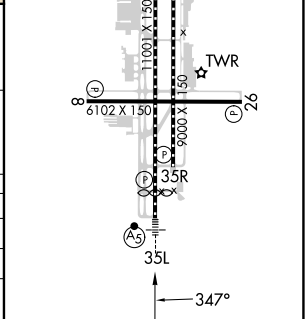
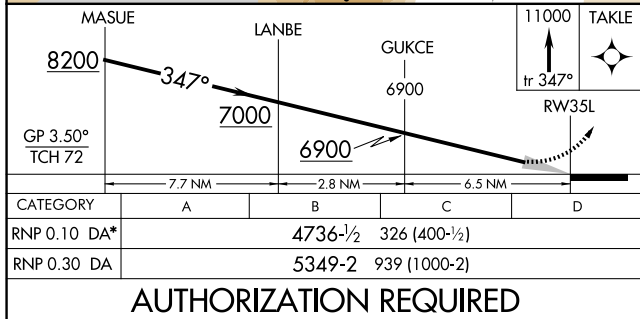
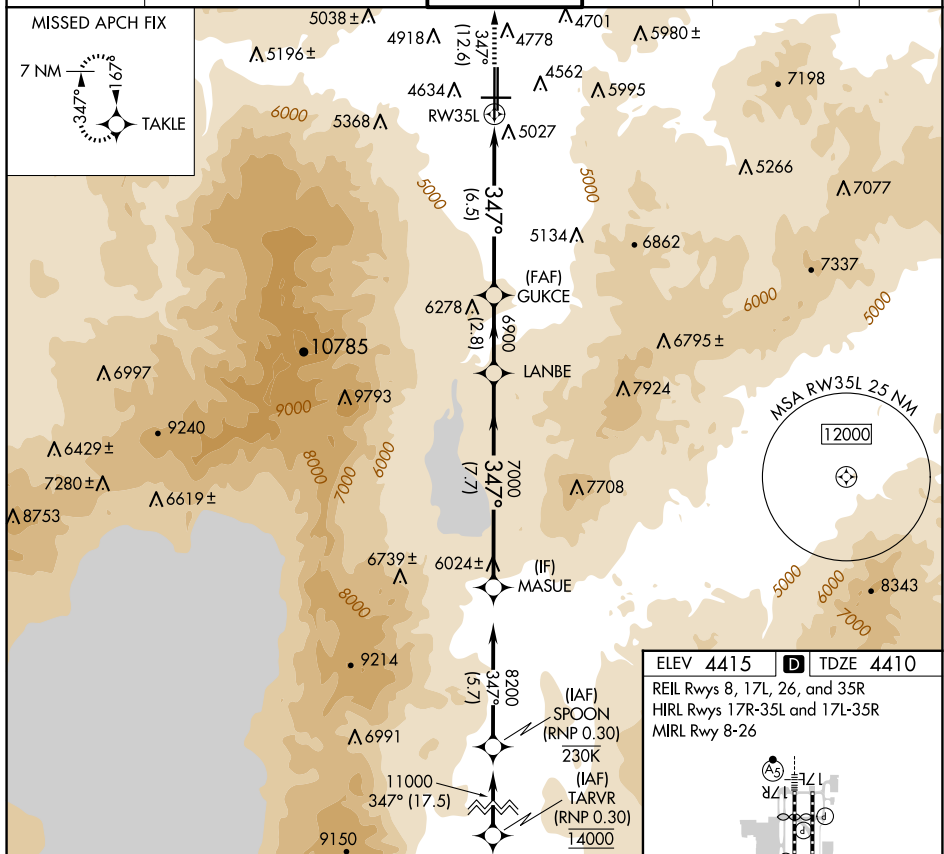
AL-346 (FAA)

25107

APP CRS <b>347°</b>	Rwy Idg TDZE Apt Elev	<b>10011</b> <b>4410</b> <b>4415</b>
------------------------	-----------------------------	--

RNAV (RNP) Z RWY 35L  
RENO/TAHOE INTL (RNO)

RNP AR APCH - GPS.				MALSR		MISSED APPROACH: Climb to 11000 on track 347° to TAKLE and hold, continue climb-in-hold to 11000. *Missed approach requires minimum climb of 300 feet per NM to 7140.	
 For uncompensated Baro-VNAV systems, procedure NA below -9°C or above 35°C.							
 -13°C							
D-ATIS		NORCAL APP CON		RENO TOWER		GND CON	
135.8	363.0	119.2	279.55	126.3	353.9	118.7	257.8
						121.9	348.6
						124.9	370.85
						CPDLC	



RENO, NEVADA  
Amdt 1 03NOV22

39°30'N-119°46'W

RENO/TAHOE INTL (RNO)

RNAV (RNP) Z RWY 35L

SW-4, 10 JUL 2025 to 07 AUG 2025

SW-4, 10 JUL 2025 to 07 AUG 2025