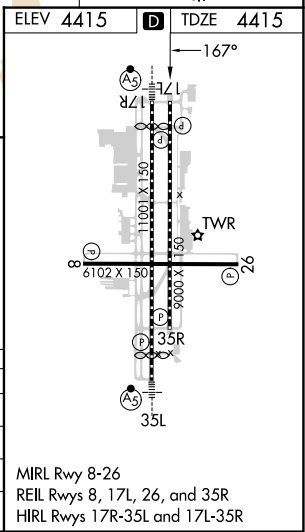
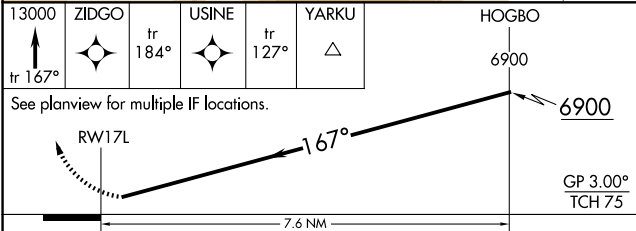
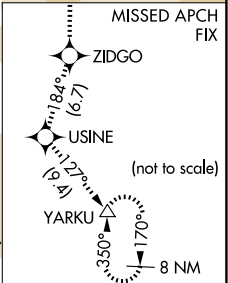
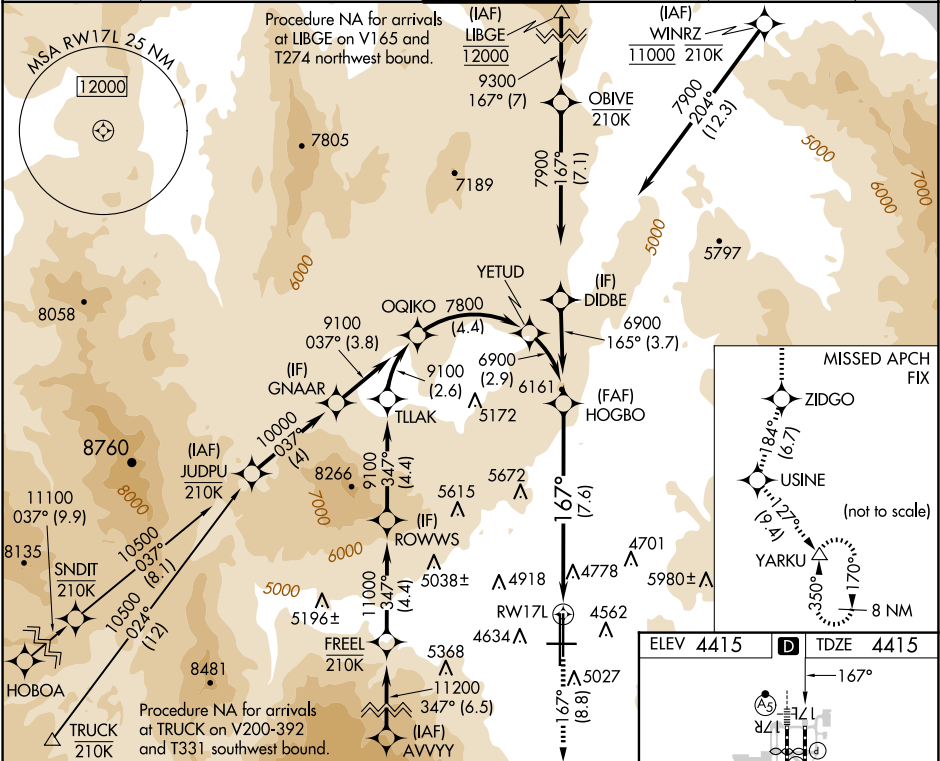


APP CRS	Rwy Idg	9000
167°	TDZE	4415
	Apt Elev	4415

RNAV (RNP) Z RWY 17L
RENO/TAHOE INTL (RNO)

RNP AR APCH - GPS.	MISSED APPROACH: Climb to 13000 on track 167° to ZIDGO and on track 184° to USINE and on track 127° to YARKU and hold, continue climb-in-hold to 13000. # Missed approach requires minimum climb of 203 feet per NM to 5040. * Missed approach requires minimum climb of 264 feet per NM to 7260.
▼ For uncompensated Baro-VNAV systems, procedure NA below -5°C or above 54°C.	

D-ATIS	NORCAL APP CON	RENO TOWER	GND CON	CLNC DEL	CPDLC
135.8 363.0	119.2 279.55 126.3 353.9	118.7 257.8	121.9 348.6	124.9 370.85	



CATEGORY	A	B	C	D
RNP 0.12 DA*		4754-1	339 (400-1)	
RNP 0.17 DA#		5017-1¾	602 (700-1¾)	
RNP 0.30 DA		5067-1⅞	652 (700-1⅞)	

AUTHORIZATION REQUIRED

SW-4, 10 JUL 2025 to 07 AUG 2025

SW-4, 10 JUL 2025 to 07 AUG 2025