

APP CRS
167°

Rwy Idg
TDZE
4415
Apt Elev
4415

RNAV (RNP) Y RWY 17R

RENO/TAHOE INTL (RNO)

RNP AR APCH - GPS.

▼

13°C

For uncompensated Baro-VNAV systems, procedure NA below -9°C or above 54°C.
For inop ALS, increase RNP 0.1 DA all Cats visibility to RVR 5500, increase RNP 0.2 DA all Cats visibility to 1% SM, increase RNP 0.3 DA all Cats visibility to 1% SM.

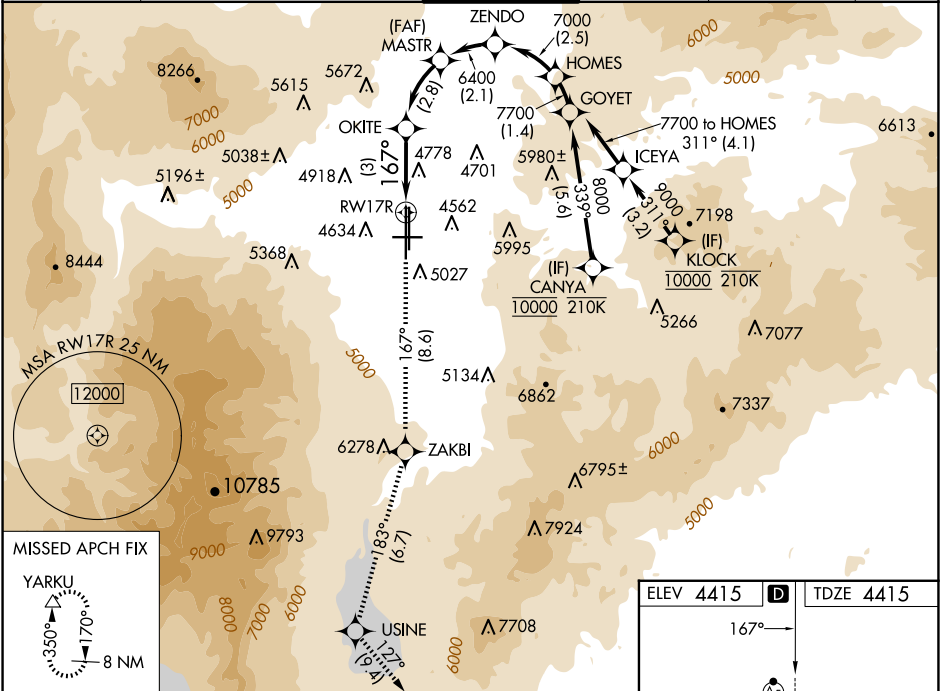
MALSR

AS

AS

MISSED APPROACH: Climb to 13000 on track 167° to ZAKBI and on track 183° to USINE and on track 127° to YARKU and hold, continue climb-in-hold to 13000.
#Missed approach requires minimum climb of 222 feet per NM to 7220.
*Missed approach requires minimum climb of 266 feet per NM to 7240.

D-ATIS	NORCAL APP CON			RENO TOWER	GND CON	CLNC DEL	CPDLC
135.8 363.0	119.2	279.55	126.3 353.9	118.7 257.8	121.9 348.6	124.9 370.85	



13000

ZAKBI

USINE

YARKU

See planview for multiple IF locations.

tr 167°

tr 183°

tr 127°

RW17R

OKITE

MASTR

ZENDO

HOMES

7700

GP 3.08°

TCH 75

3 NM

2.8 NM

2.1 NM

2.5 NM

CATEGORY	A	B	C	D
RNP 0.10 DA*	4759/30	344 (400-5%)		
RNP 0.20 DA#	4985-1¼	570 (600-1¼)		
RNP 0.30 DA	5091-1½	676 (700-1½)		

AUTHORIZATION REQUIRED

MIRL Rwy 8-26
REIL Rwys 8, 17L, 26, and 35R
HIRL Rwys 17R-35L and 17L-35R

