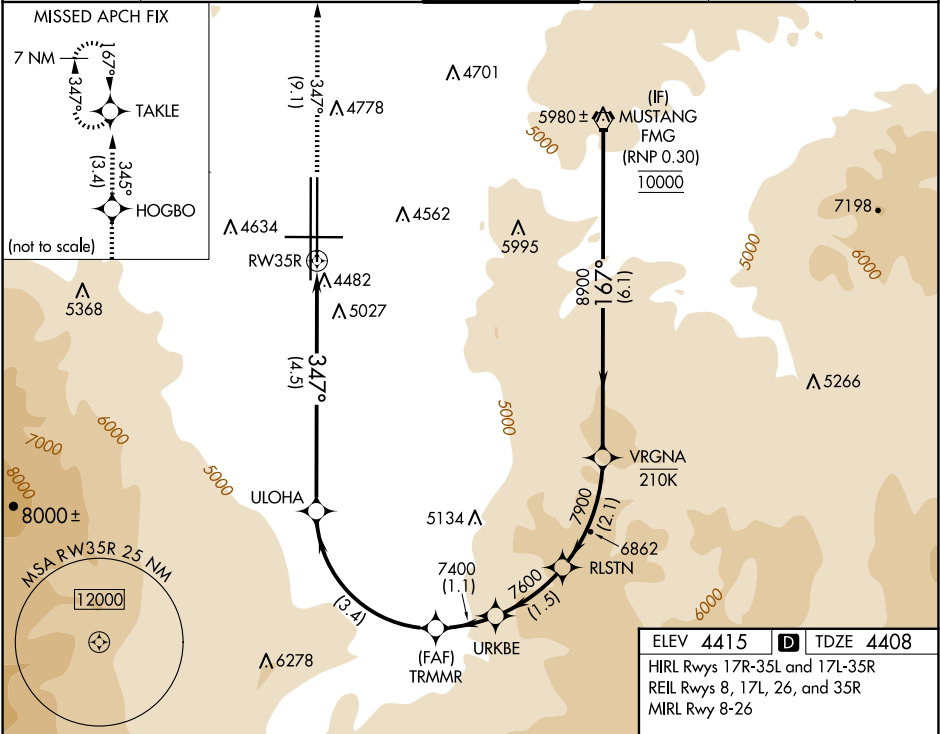


APP CRS	Rwy Idg	9000
347°	TDZE	4408
	Apt Elev	4415

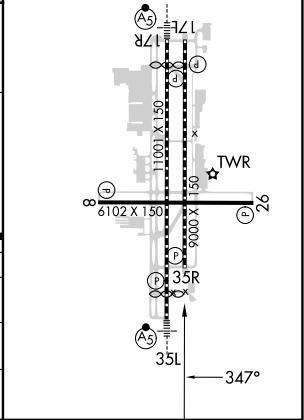
RNAV (RNP) W RWY 35R

RENO/TAHOE INTL (RNO)

RNP AR APCH - GPS.		MISSED APPROACH: Climb to 11000 on track 347° to HOGBO and on track 345° to TAKLE and hold, continue climb-in-hold to 11000. *Missed approach requires minimum climb of 301 feet per NM to 7150.			
For uncompensated Baro-VNAV systems, procedure NA below -9°C or above 34°C .					
-13°C					
D-ATIS	NORCAL APP CON	RENO TOWER	GND CON	CLNC DEL	CPDLC
135.8 363.0	119.2 279.55 126.3 353.9	118.7 257.8	121.9 348.6	124.9 370.85	



FMG VORTAC	VRGNA	RLSTN	URKBE	11000	HOGBO	TAKLE
10000	8900	7900	7600	7400	6156	RW35R
GP 3.50°	GP 3.50°	GP 3.50°	GP 3.50°	GP 3.50°	GP 3.50°	GP 3.50°
TCH 75	TCH 75	TCH 75	TCH 75	TCH 75	TCH 75	TCH 75
6.1 NM	2.1 NM	1.5 NM	1.1 NM	3.4 NM	4.5 NM	
A	B	C	D			
RNP 0.11 DA* 4762-1 354 (400-1)						
RNP 0.30 DA 5349-2½ 941 (1000-2½)						
AUTHORIZATION REQUIRED						



SW-4, 10 JUL 2025 to 07 AUG 2025

SW-4, 10 JUL 2025 to 07 AUG 2025