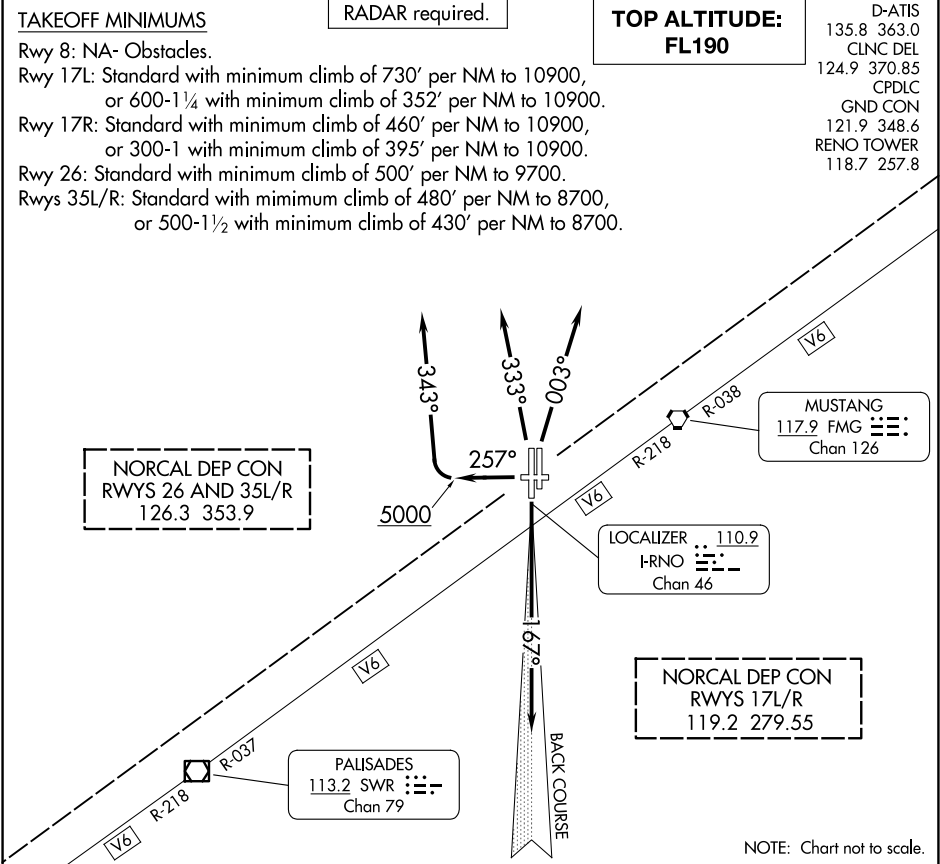


RENO ONE DEPARTURE

AL-346 (FAA)

RENO/TAHOE INTL (RNO)
RENO, NEVADA



DEPARTURE ROUTE DESCRIPTION

TAKEOFF RUNWAYS 17L/R: Climb on heading 167° and I-RNO localizer south course. Thence. . . .

TAKEOFF RUNWAY 26: Climb on heading 257° to 5000 then climbing right turn heading 343°. Thence. . . .

TAKEOFF RUNWAYS 35L/R: Climb on heading 333° CW 003° as assigned by ATC. Thence. . . .

. . . .All aircraft maintain FL190 or assigned altitude. Expect filed altitude within 5 minutes after departure. Expect RADAR vectors to assigned route/fix.

LOST COMMUNICATIONS: If not in contact with departure control within one minute after takeoff, maintain assigned heading until passing 10000, thence. . . .

RUNWAYS 17L/R DEPARTURES: Turn left direct FMG VORTAC, then on assigned route.

RUNWAYS 26 and 35L/R DEPARTURES: Turn right direct FMG VORTAC, then on assigned route.

RENO ONE DEPARTURE